



GARRICK CLOSE, SW18

£550,000

- 852.5 sqft / 79.2 sqm
- Two Double Bedrooms
- Split Level Maisonette
- SW Facing Private Garden
- Close to Clapham Junction Station
- Energy rating: C





ABOUT THE HOME

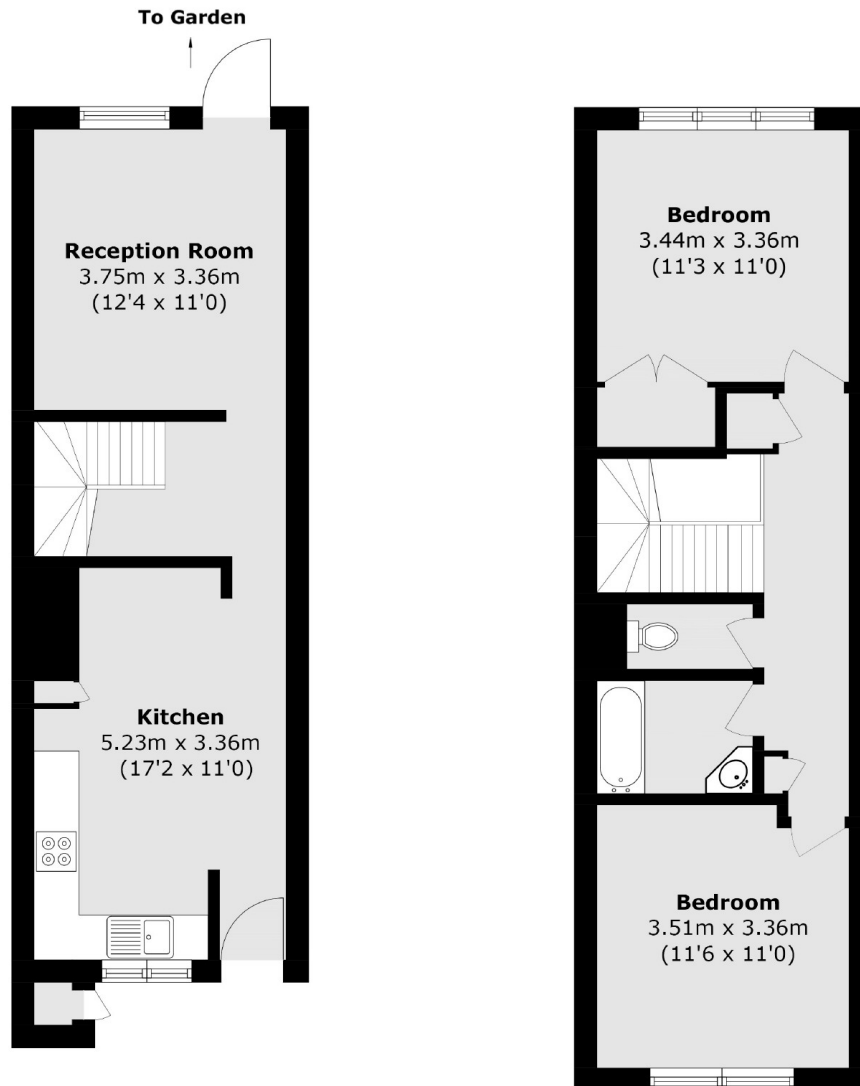
A split level, two bedroom, maisonette boasting over 852 sqft, a fantastic private garden and an allocated parking space. The property is conveniently located between Wandsworth Town and Clapham Junction.

Upon entrance, the hallway leads into a bright and spacious eat-in kitchen/dining room. To the rear of the property you can find a reception room with direct access onto a private, south-west facing, low maintenance garden. The first floor offers two generously sized double bedrooms, a contemporary family bathroom and separate W/C. Further benefits include: ample storage space throughout, allocated parking, communal gardens and within walking distance to the River Thames.

Garrick Close is a quiet, residential cul-de-sac, situated in the very heart of Wandsworth, within a short walk from both Wandsworth Town Train Station (0.3 miles) and Clapham Junction Station (0.6 miles). The property therefore offers excellent transport links, as well as being a stones throw from the shops, cafes and restaurants of St John's Hill and Old York Road.







Total area (approx.): 79.2 sq. m (852.5 sq. ft)
(Excluding External Storage)

External Storage (approx.): 0.2 sq. m (2.1 sq. ft)

JACKSONS WANDSWORTH

507 Old York Road, London,
SW18 1TF
Sales: 020 8875 8890
Lettings: 020 8875 8899

Energy Rating: C We aim to make our particulars both accurate and reliable. However they are not guaranteed; nor do they form part of an offer or contract. If you require clarification on any points then please contact us, especially if you're traveling some distance to view. Please note that appliances and heating systems have not been tested and therefore no warranties can be given as to their good working order.