



JUNIPER DRIVE, SW18

£500,000

- Two Double Bedrooms
- Private Balcony
- Open Plan Living
- Excellent Condition
- Concierge Service
- Energy Rating: C



2



1



1



## ABOUT THE HOME

A well presented, two double bedroom modern apartment in the ever popular Battersea Reach development.

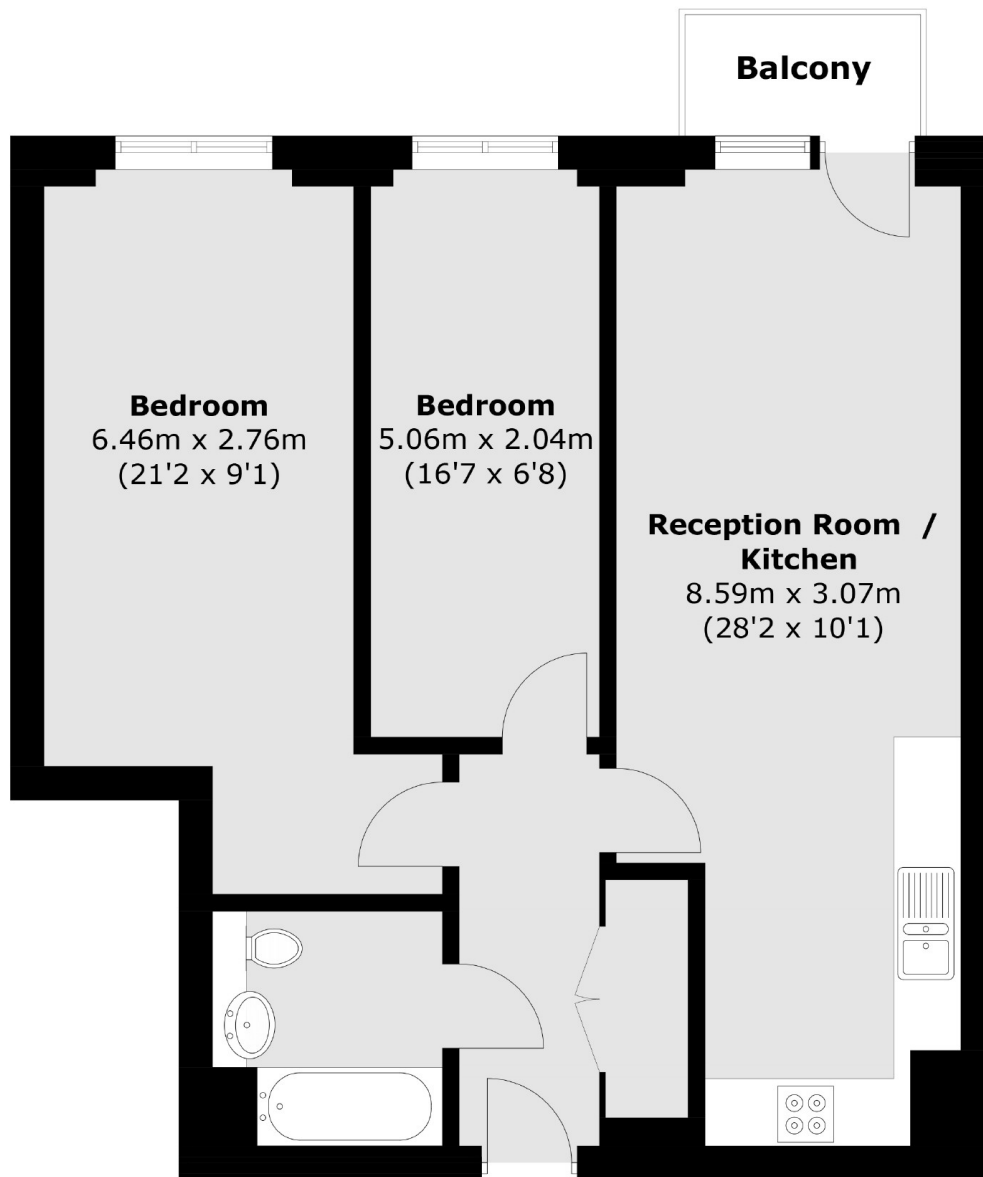
Accommodation comprises; a spacious kitchen open plan to a bright living room providing access onto a private balcony, two good sized double bedrooms and a modern bathroom. The property also benefits from a useful storage cupboard in the entrance hall. Residents benefit from 24-hour concierge & an exclusive gym, as well as on-site amenities like Tesco Express, Young's Bar & Restaurant, Edible Foods Café, yue float wellness centre & beauty salon.

Battersea Reach is a desirable riverside development which is ideally positioned for easy access to Central London via Wandsworth Town Station and Clapham Junction. Whilst being a short distance from the popular shops, bars and restaurants of Wandsworth Town and Northcote Road, it is also just across the bridge from Fulham. The Riverbus stop at Plantation Wharf offers a fast and convenient commute into the City and out to Canary Wharf.









Total area (approx.): 66.3 sq. m (713.6 sq. ft)  
Balcony area (approx.): 2.3 sq. m (24.7 sq. ft)

#### JACKSONS WANDSWORTH

507 Old York Road, London,  
SW18 1TF  
Sales: 020 8875 8890  
Lettings: 020 8875 8899

Energy Rating: We aim to make our particulars both accurate and reliable. However they are not guaranteed; nor do they form part of an offer or contract. If you require clarification on any points then please contact us, especially if you're traveling some distance to view. Please note that appliances and heating systems have not been tested and therefore no warranties can be given as to their good working order.