



COURTHOUSE WAY, SW18

£600,000

- Two Double Bedrooms
- Excellent Condition
- Two Bathrooms
- Large Private Balcony
- Service Charge: £1,700 approx.
- Energy rating: B



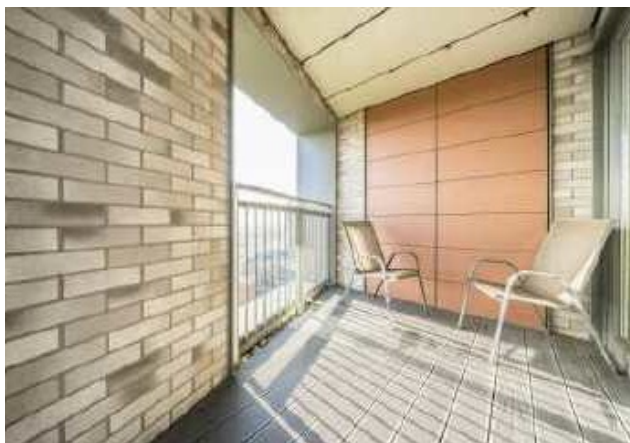


## ABOUT THE HOME

A wonderfully presented two double bedroom, two bathroom, modern apartment with large private balcony in central Wandsworth with a service charge of approximately £1,700 per annum.

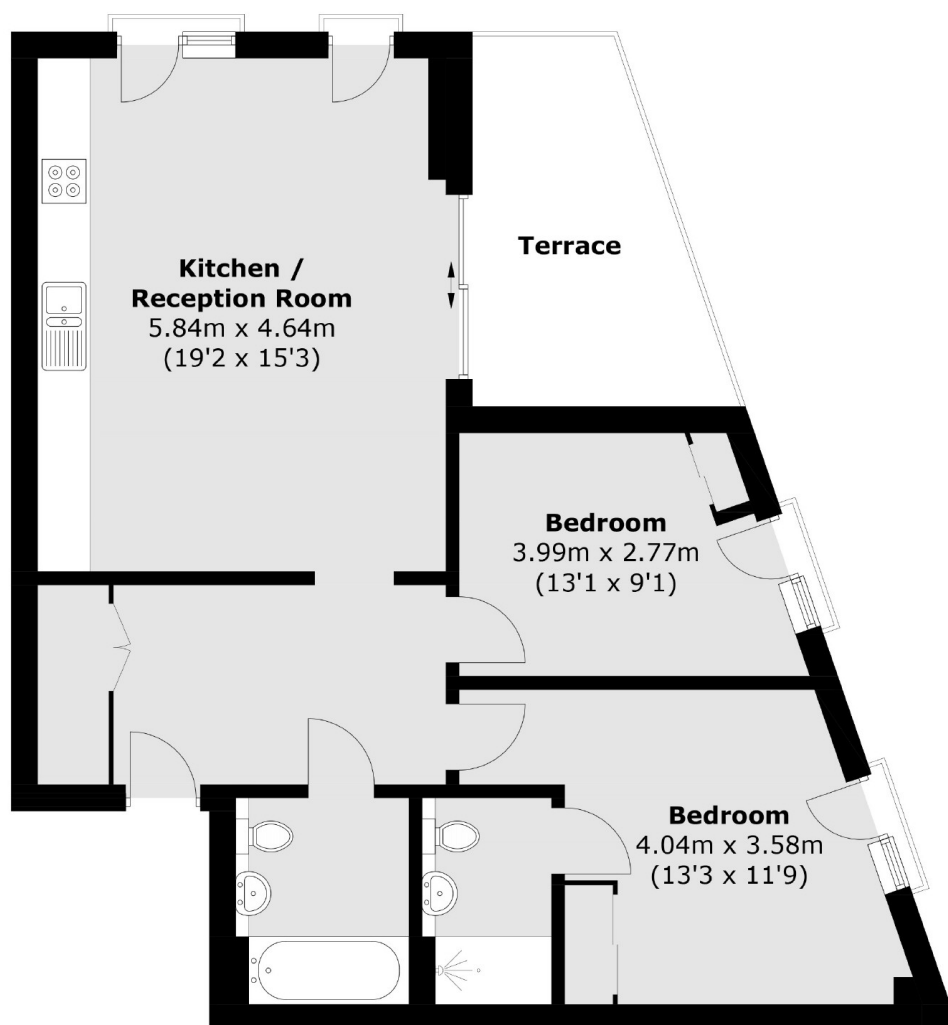
The apartment is beautifully presented and comprises of; generous utility cupboard upon entrance, an open plan reception/dining room offering a fantastic entertaining space, modern kitchen finished to an exceptional standard with ample storage space, leading to a large private balcony. There is a separate contemporary family bathroom and a double bedroom with built in wardrobes. The main double bedroom also has built in wardrobes, a modern en suite bathroom and is flooded with natural light, as are all the other rooms with floor to ceiling windows. The development also provides a concierge service and a large communal roof terrace on the 23rd floor with views across London.

This apartment is located in a prime location amongst the shops, restaurants and amenities of Southside Shopping Centre. King George's Park is within walking distance as are Wandsworth Town and Earlsfield mainline stations providing direct links to the City, the West End and outer London.









Total area (approx.): 73.2 sq. m (787.9 sq. ft)  
Terrace: 9.8 sq. m (105.5 sq. ft)

#### JACKSONS WANDSWORTH

507 Old York Road, London,  
SW18 1TF  
Sales: 020 8875 8890  
Lettings: 020 8875 8899

Energy Rating: We aim to make our particulars both accurate and reliable. However they are not guaranteed; nor do they form part of an offer or contract. If you require clarification on any points then please contact us, especially if you're traveling some distance to view. Please note that appliances and heating systems have not been tested and therefore no warranties can be given as to their good working order.