



ELTRINGHAM STREET, SW18

£550,000

- Two Double Bedrooms
- Views of London Skyline
- Open Plan Living
- Excellent Condition
- Reasonable Service Charge
- Energy rating: B



2



1



1



ABOUT THE HOME

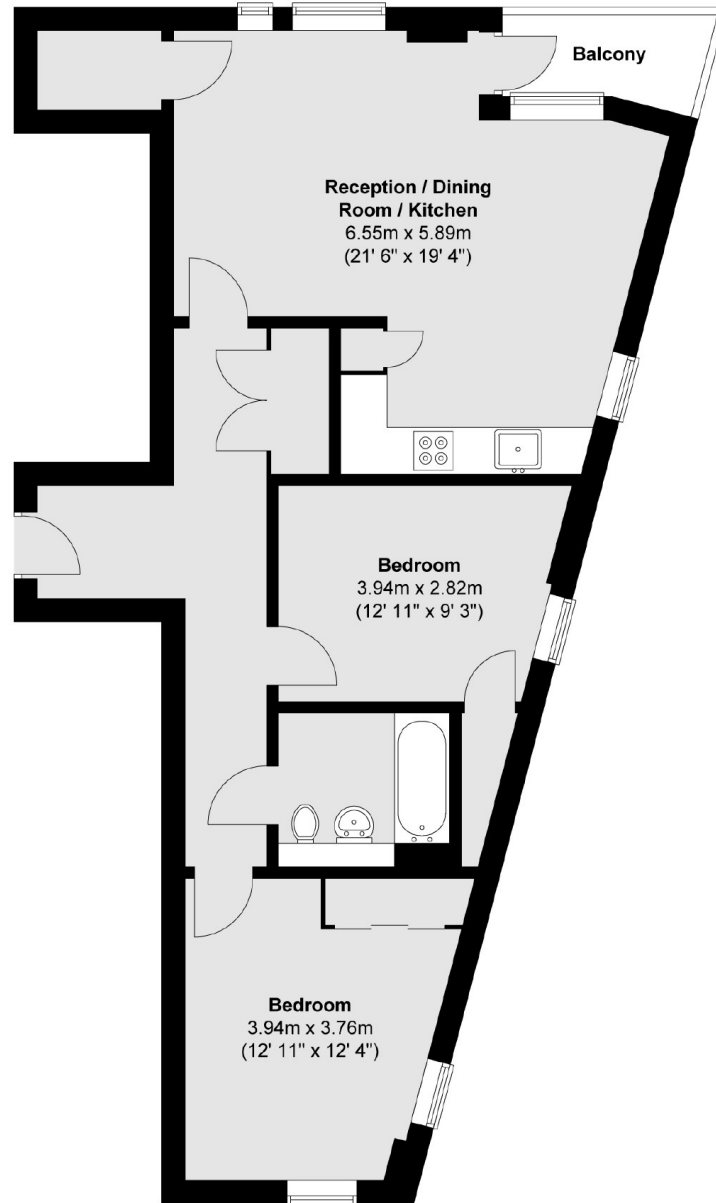
A well appointed modern apartment with two double bedrooms, spacious open-plan living/kitchen and a private balcony.

The apartment is beautifully presented, boasting uninterrupted views of London. It is flooded with natural light through floor to ceiling windows and features energy efficient heat pump underfloor heating throughout. There is a spacious hallway leading to an open plan living/dining area with a modern kitchen, offering a sociable space for entertaining. The lounge also has a private balcony and a separate storage space. The master bedroom has double aspect windows, as well as a built-in wardrobe. The second bedroom is another spacious double with a generous cupboard. The bathroom is modern and finished to a high standard. There are also storage facilities in the hallway suitable for a washing machine.

Oxborough House is situated within the sought after Schoolyard development, 0.3 miles to Wandsworth Town Station (reaching Waterloo in 15 minutes) and 0.7 miles To Clapham Junction Station offering diverse travel access in and out of London. On your doorstep







Total area (approx.) : 73.6 sq. m (792 sq. ft)
Total balcony area (approx.) : 3.9 sq. m (42 sq. ft)

JACKSONS WANDSWORTH

507 Old York Road, London,
SW18 1TF
Sales: 020 8875 8890
Lettings: 020 8875 8899

Energy Rating: B We aim to make our particulars both accurate and reliable. However they are not guaranteed; nor do they form part of an offer or contract. If you require clarification on any points then please contact us, especially if you're traveling some distance to view. Please note that appliances and heating systems have not been tested and therefore no warranties can be given as to their good working order.