



VERMONT ROAD, SW18

£375,000

- Two Bedrooms
- Modern Kitchen
- Lift Access
- Off Street Parking Available
- Sought After Location
- Energy rating: C





## ABOUT THE HOME

A spacious two double bedroom apartment in a sought after Wandsworth location.

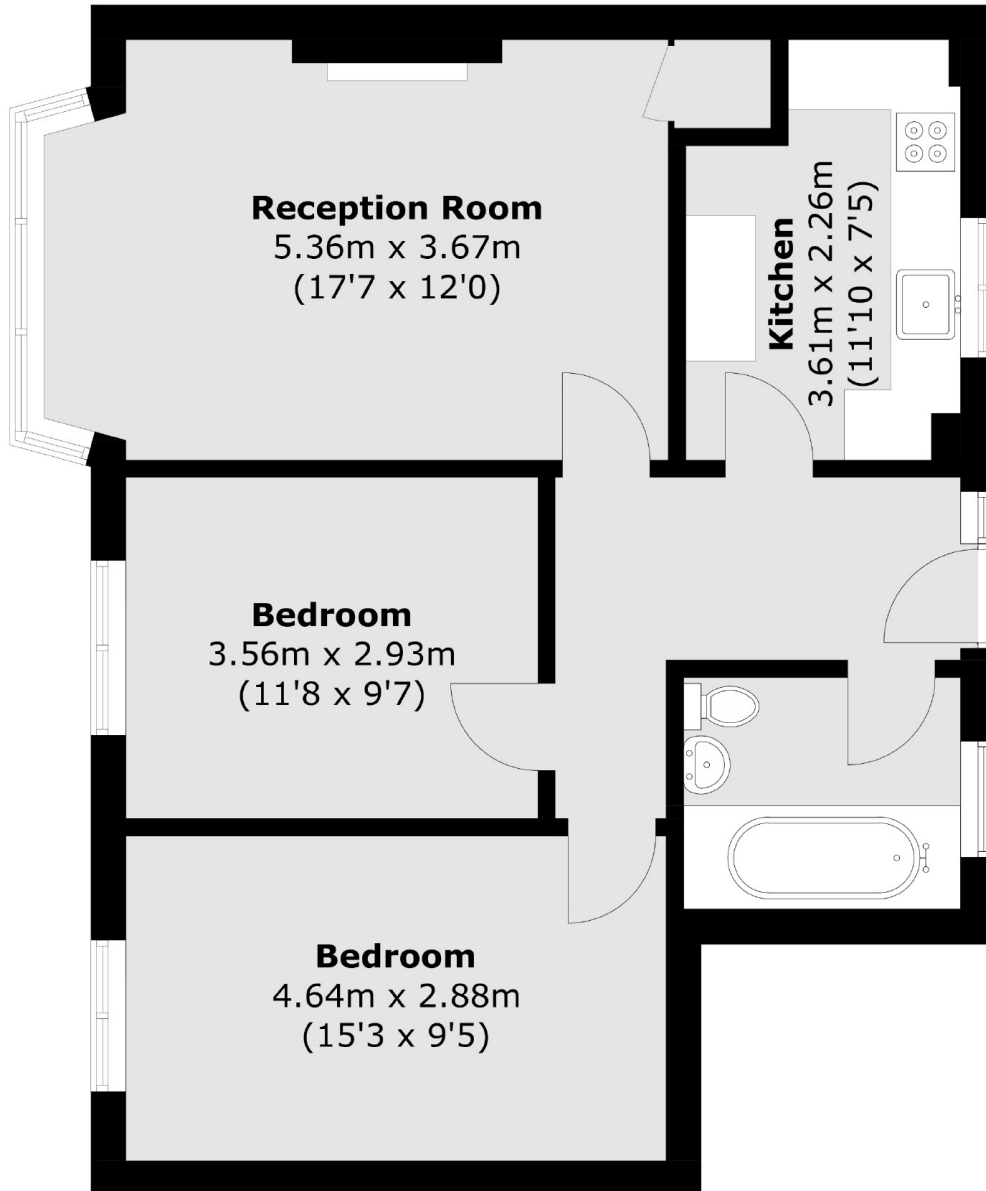
Entered via it's own front door the apartment comprises; a spacious entrance hall, generous family bathroom, a bright reception room with a useful storage cupboard, recently refurbished separate kitchen benefitting from an array of integrated appliances and two good-sized double bedrooms. The property benefits from an abundance of light throughout.

Whitecliff House is located in close proximity to Southside shopping complex, with its array of high street shops, restaurants, multiplex cinema and a gym. Wandsworth Town and Earlsfield mainline stations are both within close proximity of the property, providing direct links to the City, the West End and outer London. King George's Park with its tennis courts, pond and playing fields is just moments away.









Total area (approx.): 65.5 sq. m (705.0 sq. ft)

#### JACKSONS WANDSWORTH

507 Old York Road, London,  
SW18 1TF  
Sales: 020 8875 8890  
Lettings: 020 8875 8899

Energy Rating: We aim to make our particulars both accurate and reliable. However they are not guaranteed; nor do they form part of an offer or contract. If you require clarification on any points then please contact us, especially if you're traveling some distance to view. Please note that appliances and heating systems have not been tested and therefore no warranties can be given as to their good working order.