



MERTON ROAD, SW18

£375,000

- One Bedroom
- Ground Floor
- Private Garden
- Chain Free
- Sought After Location
- Energy rating: TBC





ABOUT THE HOME

A well-presented ground floor Victorian conversion flat benefiting from a private garden and no onward chain.

Situated on the ground floor the property is in good condition with a contemporary finish throughout. Upon entrance there is a hallway with useful storage cupboard, fitted kitchen and modern bathroom. To the front of the property is a bright double bedroom with ample built in storage space. To the rear is a reception room with doors leading to a generous private garden which provides a shed for storage. The property benefits from an abundance of light throughout and high ceilings.

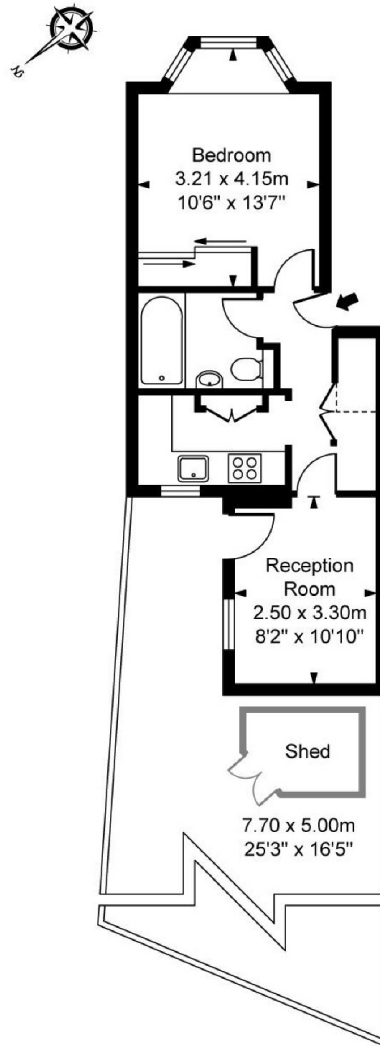
Located equidistant of both Wandsworth Town Rail Station & East Putney Tube Station and within easy reach of Southside Shopping Center and King George's Park.





Merton Road, SW18

Approximate Gross Internal Area
34.85 sq m / 375 sq ft
(Excluding Shed)



Ground Floor

ILLUSTRATION FOR IDENTIFICATION PURPOSES ONLY

ALL MEASUREMENTS ARE MAXIMUM, AND INCLUDE WINDOW BAYS AND WARDROBES WHERE APPLICABLE
THIS PLAN MUST NOT BE REPRODUCED BY ANY OTHER PERSON WITHOUT PERMISSION.

JACKSONS WANDSWORTH

507 Old York Road, London,
SW18 1TF

Sales: 020 8875 8890

Lettings: 020 8875 8899

Energy Rating: We aim to make our particulars both accurate and reliable. However they are not guaranteed; nor do they form part of an offer or contract. If you require clarification on any points then please contact us, especially if you're traveling some distance to view. Please note that appliances and heating systems have not been tested and therefore no warranties can be given as to their good working order.