

GROOM CRESCENT, SW18

£1,000,000

- Four Double Bedrooms
- Two Outbuildings
- Excellent Condition
- Sought After Location
- Two Parking Spaces
- Energy rating: C





ABOUT THE HOME

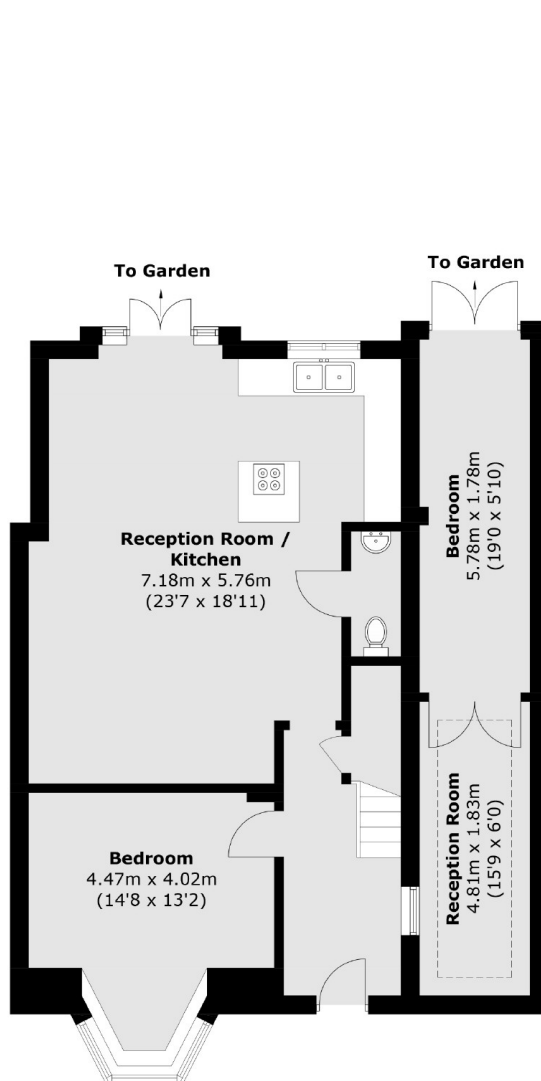
A beautiful example of a four double bedroom family home benefiting from an impressive garden and heaps of natural light throughout the property.

The property has. Accommodation comprises; 4 great bedrooms, fantastic open plan kitchen/dining room with bi-fold doors leading to a low maintenance rear garden, an family bathroom on the first floor. Every room benefits from high ceilings, an abundance of light and from being tastefully decorated throughout.

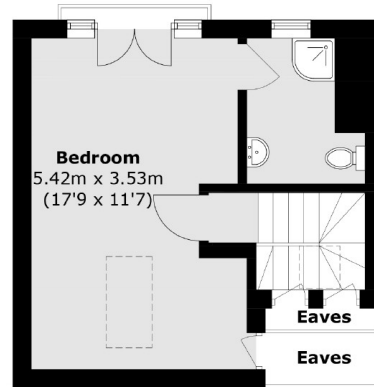
Groom Crescent is a quiet and private residential road which is found off of Heathfield Road which is in easy reach of Wandsworth Common, Earlsfield and Clapham Junction's mainline railway stations, Garratt Lane's selection of shops, restaurants and wine bars. The green open spaces of Wandsworth Common are also close by and the property is well situated for the most sought after schools in the area.



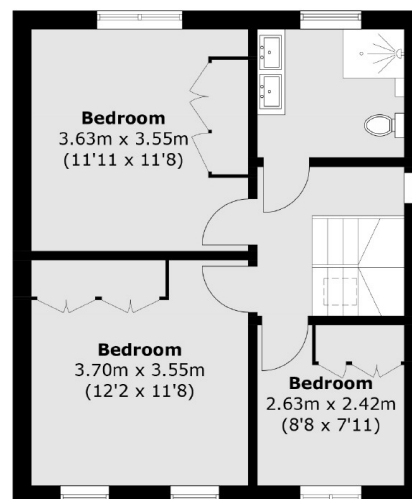




Ground Floor



Second Floor



First Floor

Total area (approx.): 136.4 sq. m (1,468.2 sq. ft)

(Excluding Eaves)

External Bedroom / Reception Room: 19.7 sq. m (212.0 sq. ft)

JACKSONS WANDSWORTH

507 Old York Road, London,

SW18 1TF

Sales: 020 8875 8890

Lettings: 020 8875 8899

Energy Rating: C We aim to make our particulars both accurate and reliable. However they are not guaranteed; nor do they form part of an offer or contract. If you require clarification on any points then please contact us, especially if you're traveling some distance to view. Please note that appliances and heating systems have not been tested and therefore no warranties can be given as to their good working order.