



## St. Ann's Hill, SW18

£850,000

A split level four bedroom, two bathroom apartment set within a Victorian building and benefiting from spacious terrace and being sold with no onward chain.

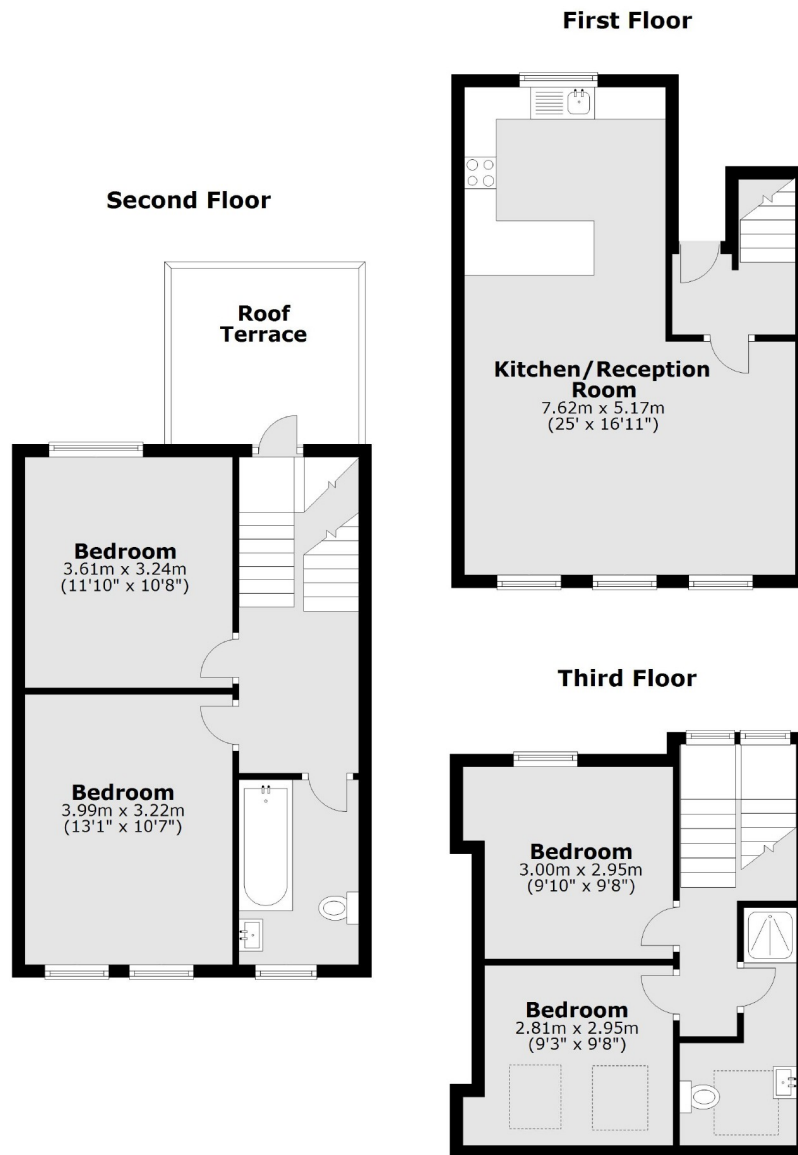
- Four Bedrooms
- Two Bathrooms
- Victorian Conversion
- Good Condition
- Private Roof Terrace
- Sought After Location



The accommodation comprises: kitchen with breakfast bar open plan to the reception room with dining area; all offering a generous entertaining space. The private roof terrace is accessed from the stairs to the second floor which consists of two double bedrooms and a family bathroom. A further two double bedrooms and a shower room are located on the third floor.

St Ann's Hill is close to the open spaces of Wandsworth Common and all of the amenities of the Southside Shopping Centre: such as a Waitrose and Virgin Active Gym. There is good transport from Wandsworth Town mainline station and numerous bus services in the area. The area is also well known for its superb schools, both state and private.





Main area: Approx. 106.6 sq. metres (1147.3 sq. feet)  
Plus roof terrace, approx. 8.4 sq. metres (89.9 sq. feet)

Jacksons Earlsfield  
372-374 Garratt Lane  
Earlsfield  
London  
SW18 4ES  
020 8971 7979

Energy Rating: C We aim to make our particulars both accurate and reliable. However they are not guaranteed; nor do they form part of an offer or contract. If you require clarification on any points then please contact us, especially if you're traveling some distance to view. Please note that appliances and heating systems have not been tested and therefore no warranties can be given as to their good working order.