



GARRATT LANE, SW17

£700,000

- Victorian Terraced House
- Three Double Bedrooms
- Kitchen/Breakfast Room
- Private Rear Garden
- Chain Free
- Energy rating: D





ABOUT THE HOME

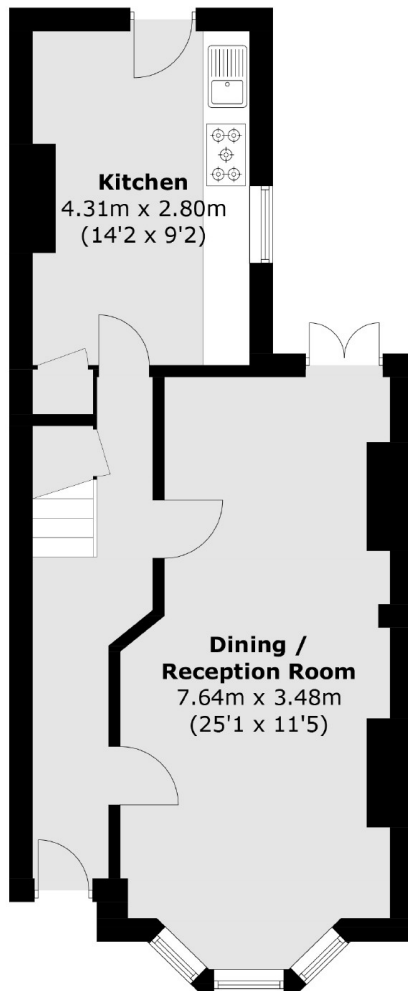
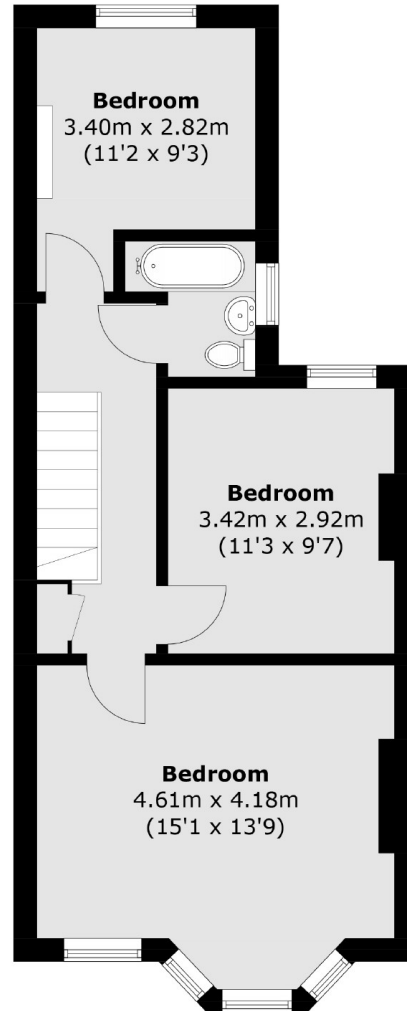
A Victorian terraced house with three double bedrooms and a private rear garden.

Accommodation comprises; an entrance hall, generous reception room open to a second reception currently used as a dining room, a spacious kitchen, three double bedrooms, ample storage, a modern family bathroom and a large south facing private garden. The property has been kept in very good condition, however still offers great scope to extend into the loft space, side return and rear subject to planning permission.

The property is situated in a sought after location offering easy access to Earlsfield mainline railway station, Tooting Broadway underground station and Wandsworth Common. The green spaces of Garratt Park are just a short walk away.





**Ground Floor****First Floor**

Total area (approx.): 92.5 sq. m (995.6 sq. ft)

JACKSONS EARLSFIELD

372-374 Garratt Lane,
Earlsfield, London, SW18 4ES
Sales: 020 8971 7979
Lettings: 020 8971 7070

Energy Rating: D We aim to make our particulars both accurate and reliable. However they are not guaranteed; nor do they form part of an offer or contract. If you require clarification on any points then please contact us, especially if you're traveling some distance to view. Please note that appliances and heating systems have not been tested and therefore no warranties can be given as to their good working order.