



JOHN ARCHER WAY, SW18

£475,000

- Two Double Bedrooms
- Modern Development
- Allocated Parking
- Ground Floor
- Sought After Location
- Energy rating: C





## ABOUT THE HOME

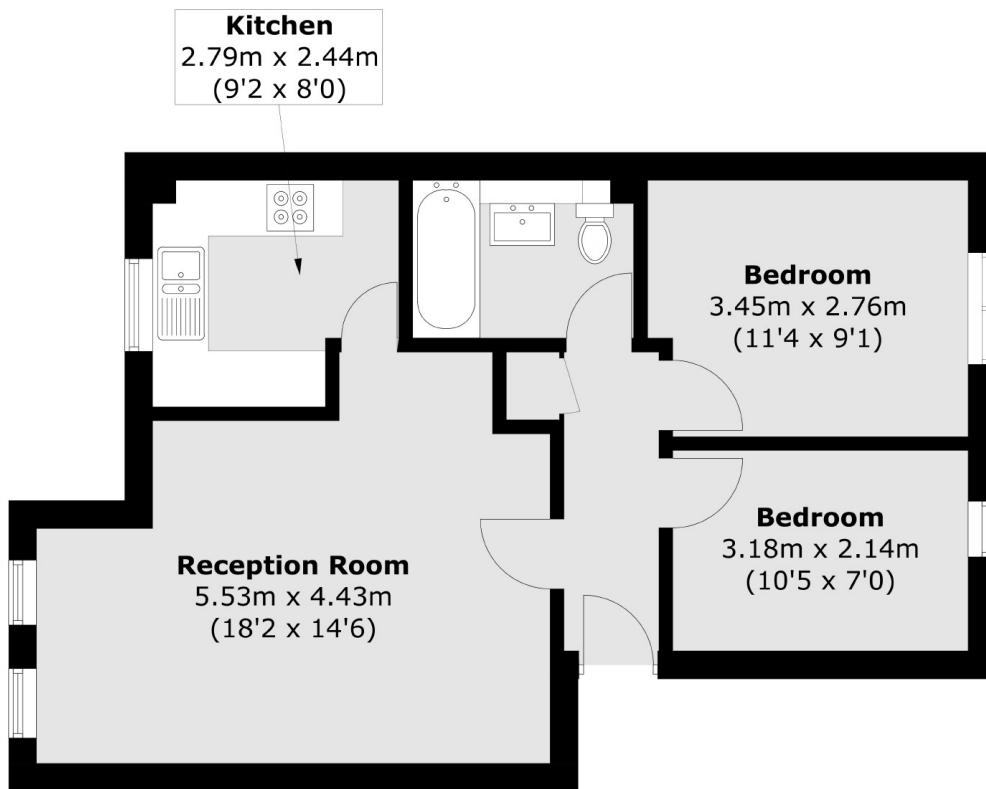
This property is set within a sought after location overlooking Wandsworth common. This ground floor two bedroom apartment is situated in a modern development finished to an excellent standard.

Accommodation comprises; entrance hall with useful storage cupboard, two generous double bedrooms, modern family bathroom, the spacious reception room is open plan to the dining area which benefits from an abundance of natural light, behind this is a well furnished kitchen. The property is tastefully decorated throughout and benefits from an allocated parking space and landscaped communal gardens.

The property is situated in a sought after modern development being just 0.9 miles from Clapham Junction. Wandsworth Town and Earlsfield mainline stations are within close proximity of the property as well as the array of amenities of St John's Hill, Old York Road and Garratt Lane.







Total area (approx.): 53.0 sq. m (570.5 sq. ft)

#### JACKSONS WANDSWORTH

507 Old York Road, London,  
SW18 1TF  
Sales: 020 8875 8890  
Lettings: 020 8875 8899

Energy Rating: C We aim to make our particulars both accurate and reliable. However they are not guaranteed; nor do they form part of an offer or contract. If you require clarification on any points then please contact us, especially if you're traveling some distance to view. Please note that appliances and heating systems have not been tested and therefore no warranties can be given as to their good working order.