



BARTHOLOMEW CLOSE, SW18

£825,000

- Freehold House
- Three Bedrooms
- Large Private Garden
- Allocated Parking
- Excellent Condition
- Sought After Location





ABOUT THE HOME

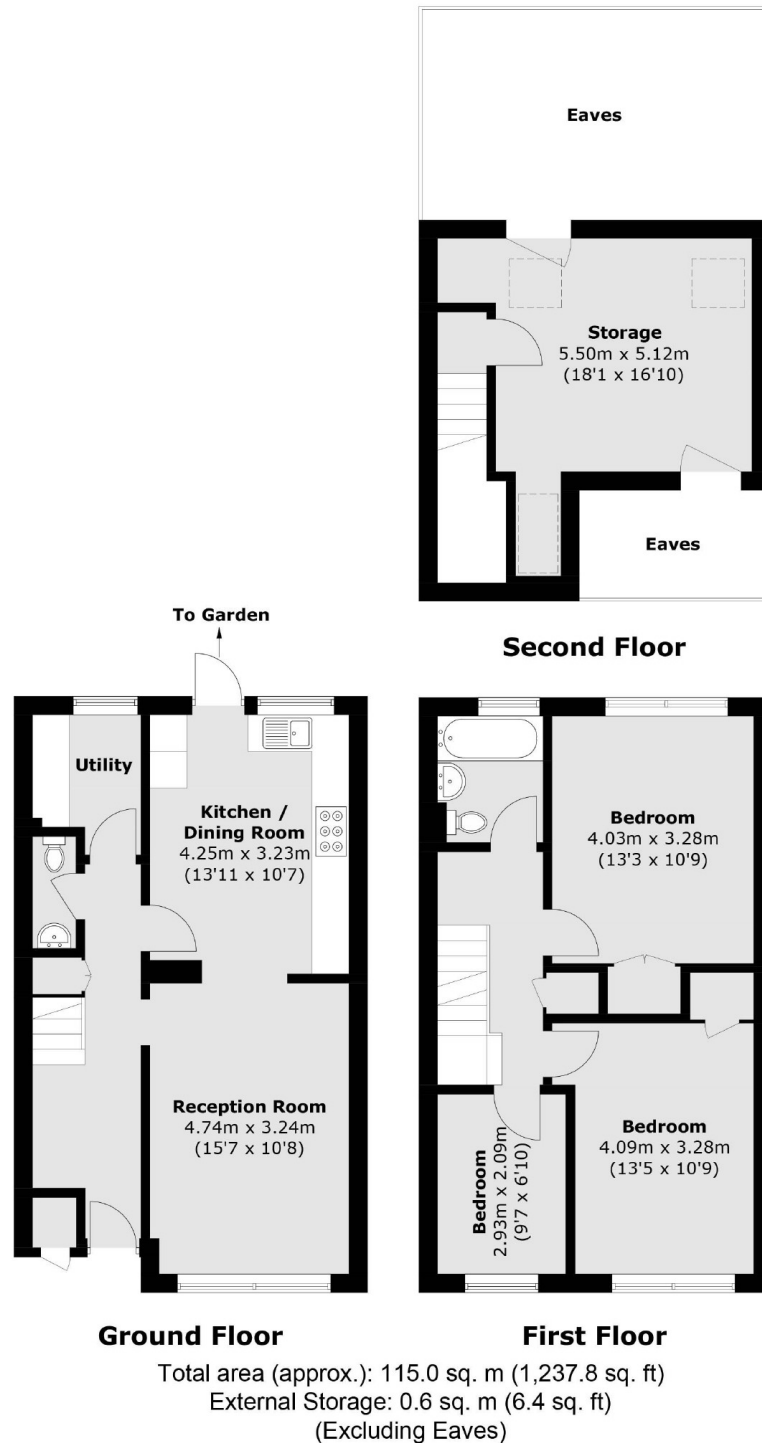
A well presented three bedroom family house which enjoys a large private rear garden, allocated parking and is ideally located for Wandsworth Town.

Accommodation comprises; generous hallway with ample storage, guest w/c and a useful utility room, a bright reception room open plan to a spacious kitchen/dining room which leads onto a large private garden. To the first floor there are two double bedrooms, a single bedroom and a modern family bathroom. On the top floor there is ample loft storage space. The property also benefits from allocated parking.

Bartholomew Close is a quiet cul-de-sac located 0.4 miles to Wandsworth Town station and 0.7 miles to Clapham Junction mainline station. Wandsworth's Southside shopping centre is only 0.9 miles away with a fantastic array of shops, restaurants and bars. A great selection of popular local pubs such as The Alma and The Ship are also within half a mile.






JACKSONS WANDSWORTH

507 Old York Road, London,
 SW18 1TF
 Sales: 020 8875 8890
 Lettings: 020 8875 8899

Energy Rating: C We aim to make our particulars both accurate and reliable. However they are not guaranteed; nor do they form part of an offer or contract. If you require clarification on any points then please contact us, especially if you're traveling some distance to view. Please note that appliances and heating systems have not been tested and therefore no warranties can be given as to their good working order.