



JEYPORE ROAD, SW18

£585,000

- Three bedrooms
- Victorian property
- Private garden
- Split level
- Open-plan
- Energy rating: D





ABOUT THE HOME

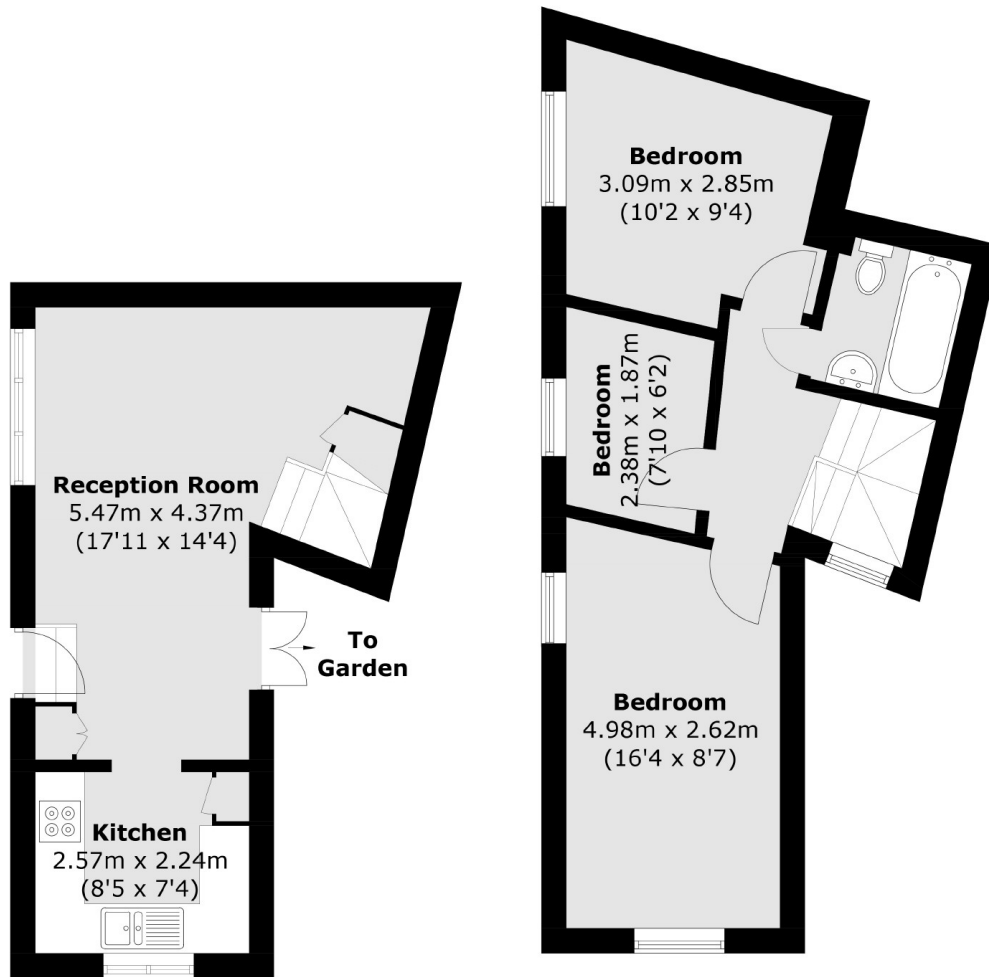
A well presented period conversion flat which offers a generous open plan living space, three bedrooms and a private garden.

This former end of terrace house is laid out over two floors and comprises; a generous open plan living and dining room offering a fantastic entertaining space, separate stylish kitchen, and doors leading to a wonderful private garden which benefits from rear access. On the first floor is a large master bedroom, two additional bedrooms and a spacious and well presented family bathroom.

Located on one of the areas most popular road's and situated for some of the best schools, Jeypore Road gives ease of access to Wandsworth Town and Earlsfield's mainline stations and Garratt Lane's shops, bars and restaurants, providing access to both Wandsworth Town and Tooting Broadway with their range of amenities.





**Ground Floor****First Floor**

Total area (approx.): 61.2 sq. m (658.7 sq. ft)

JACKSONS WANDSWORTH

507 Old York Road, London,
SW18 1TF
Sales: 020 8875 8890
Lettings: 020 8875 8899

Energy Rating: We aim to make our particulars both accurate and reliable. However they are not guaranteed; nor do they form part of an offer or contract. If you require clarification on any points then please contact us, especially if you're traveling some distance to view. Please note that appliances and heating systems have not been tested and therefore no warranties can be given as to their good working order.