



Juniper Drive, SW18

£625,000

A luxury modern apartment with two double bedrooms, spacious open plan living/kitchen room with balcony and river views.

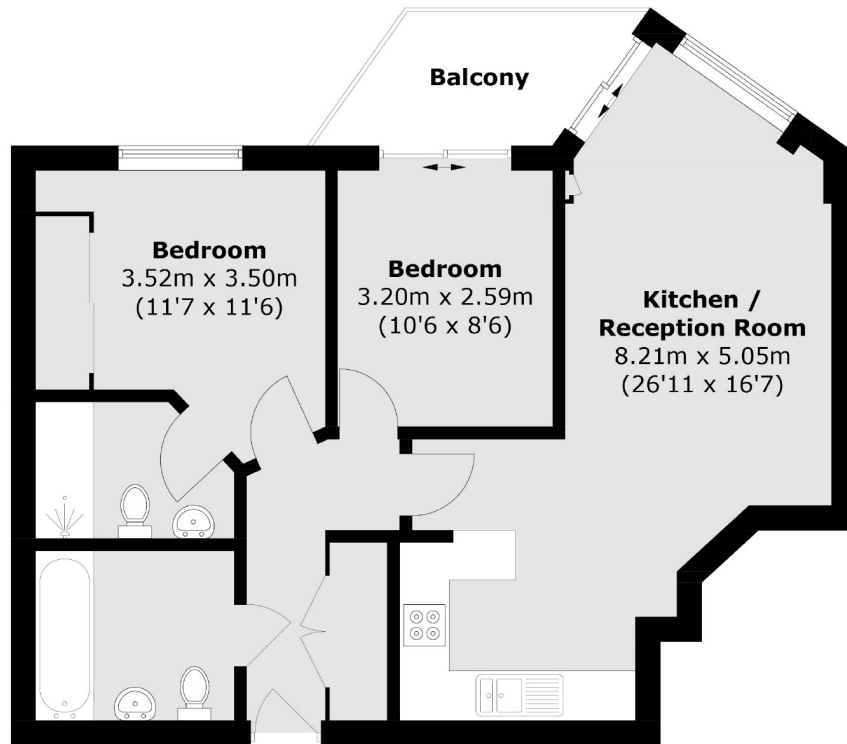
- Two Double Bedrooms
- Private Balcony
- Two Bathrooms
- High Specification
- Concierge Service
- River Views



Presented to an excellent standard this modern apartment comprises of; generous entrance hallway, modern kitchen open plan to the reception/dining room offering a fantastic entertaining space and a private balcony with views of the River Thames. Both bedrooms are generous doubles, with master bedroom containing an en-suite and there is a separate contemporary family bathroom. In addition, the property has additional built in storage cupboards in the hallway and secure bike storage.

Battersea Reach is a desirable riverside development which is ideally positioned for easy access to Central London via Wandsworth Town Station and Clapham Junction. Whilst being a short distance from the popular shops, bars and restaurants of Wandsworth Town and Northcote Road, it is also just across the bridge from Fulham. The Riverbus stop at Plantation Wharf offers a fast and convenient commute into the City and out to Canary Wharf.





Total area (approx.): 62.0 sq. m (667.4 sq. ft)
Balcony (approx.): 4.7 sq. m (50.6 sq. ft)

Jacksons Wandsworth
507 Old York Road
London
SW18 1TF
020 8875 8890
wandsworth.sales@jacksonsestateagents.com

Energy Rating: We aim to make our particulars both accurate and reliable. However they are not guaranteed; nor do they form part of an offer or contract. If you require clarification on any points then please contact us, especially if you're traveling some distance to view. Please note that appliances and heating systems have not been tested and therefore no warranties can be given as to their good working order.