



## Drapers Yard, SW18

£795,000

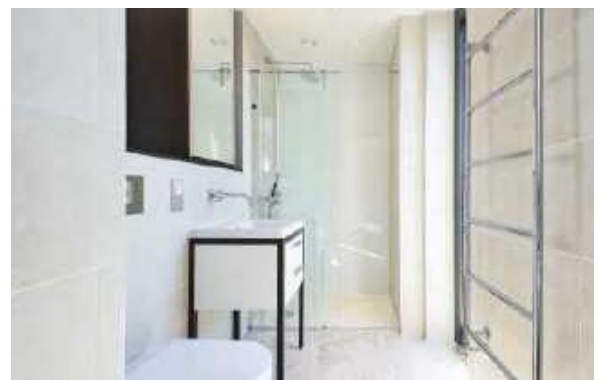
An immaculately presented 963 SqFt two bedroom, two bath flat with a large wraparound balcony and landscaped communal gardens, located within the heart of Wandsworth.

- Modern Apartment Complex
- Two Generous Bedrooms
- Two Bathrooms
- Fantastic Location
- High Spec Finish
- 24 Hour Concierge



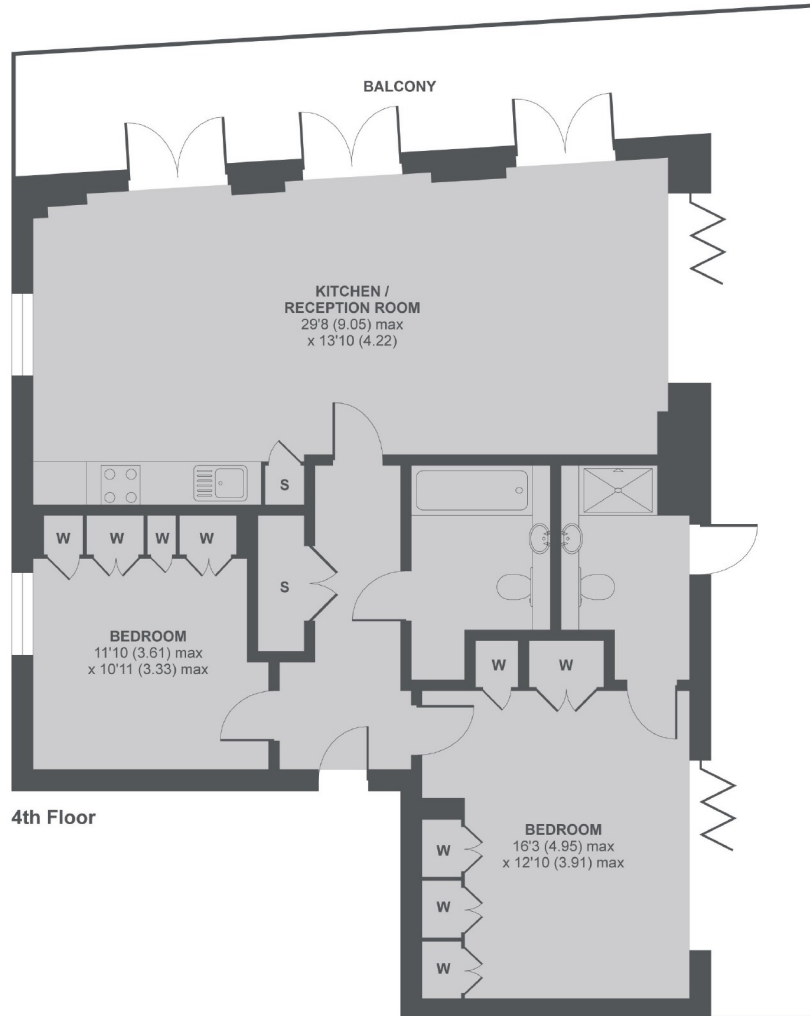
Located on the fourth floor of a modern apartment block complex, is this beautifully presented two bedroom flat. This property offers wonderful natural light throughout with high ceilings and full height windows, as well as very spacious accommodation. The property consists of an entrance hall with built in storage leading to two very generous double bedrooms, one with a modern ensuite and an immaculately finished family bathroom. To the end of the property there is a bright and spacious, open plan kitchen/dining area/reception room. The kitchen features an array of integrated appliances and a breakfast bar, with the reception room benefitting from an abundance of natural light flowing throughout. The property boasts a wraparound West/Southwest facing balcony with access from both the lounge and master bedroom.

Gowing House is located just 480 metres from Wandsworth Town station, this development is located for ease of access to central London. As well as providing a range of restaurants, cafés and the newly extended









### Drapers Yard, SW18

APPROX FLOOR AREA 963 SQ.FT 89.5 SQ.M

Copyright nichecom.co.uk 2018 REF : 277031

Jacksons Wandsworth  
507 Old York Road  
London  
SW18 1TF  
020 8875 8890  
wandsworth.sales@jacksonsestateagents.com

Energy Rating: B We aim to make our particulars both accurate and reliable. However they are not guaranteed; nor do they form part of an offer or contract. If you require clarification on any points then please contact us, especially if you're traveling some distance to view. Please note that appliances and heating systems have not been tested and therefore no warranties can be given as to their good working order.