



Eltringham Street, SW18

£400,000

A luxury modern ground floor apartment with balcony and well kept communal grounds.

- One Bedroom
- Modern Apartment
- Open Plan Reception & Kitchen
- Immaculate Condition
- Balcony
- Sought After Location

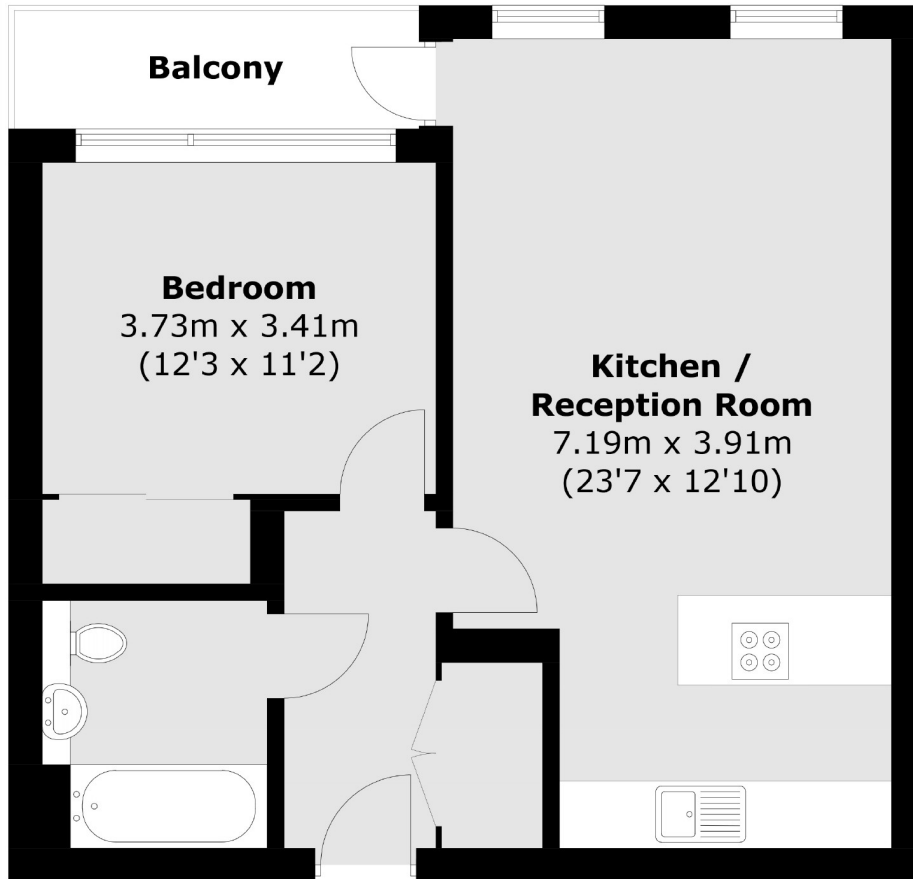
For further information on the costs associated with renting a property, please pop into our office or visit our website.



The apartment is beautifully presented and comprises of; a large hallway with underfloor heating throughout, a modern kitchen finished to a high standard, an open plan reception/dining room offering a fantastic entertaining space with private balcony. The double bedroom with built in wardrobes. In addition, the property has additional built in storage cupboards in the hallway. There is secure bike storage available.

Peachey House is located in a residential location which provides easy access to Wandsworth Town and Clapham Junction mainline stations, the River Thames is within easy reach as are an array of shops and restaurants.





Ground Floor

Total area (approx.): 50.6 sq. m (544.6 sq. ft)
Balcony : 3.8 sq. m (40.9 sq. ft)

Jacksons Wandsworth
507 Old York Road
London
SW18 1TF
020 8875 8899
wandsworth.lettings@jacksonsestateagents.com

Energy Rating: C We aim to make our particulars both accurate and reliable. However they are not guaranteed; nor do they form part of an offer or contract. If you require clarification on any points then please contact us, especially if you're traveling some distance to view. Please note that appliances and heating systems have not been tested and therefore no warranties can be given as to their good working order.