



Ullathorne Road, SW16

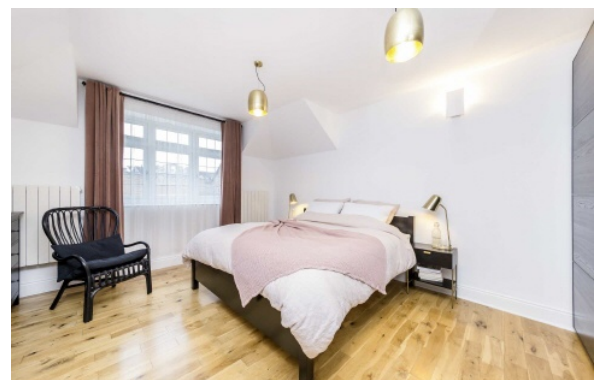
£1,475,000

A four bedroom, four bathroom semi-detached house. The property is complete with off street parking for several cars and a large wrap around garden, close to Tooting Bec Common.

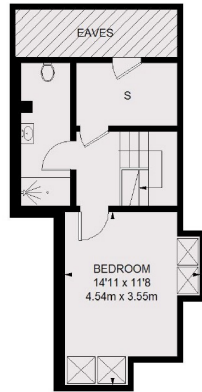
- Four Bedrooms
- Four Bathrooms
- Off Street Parking
- Fantastic Garden
- Four Storeys
- Scope to Extend



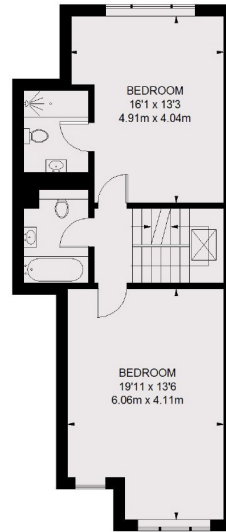
Ullathorne Road is well positioned for Tooting Bec Common and the Lido. Transport links are excellent, with links to London bridge and the City accessible via Streatham station and Tooting Bec Underground. There are several independent shops, restaurants, pubs and cafés nearby, on top of well known supermarkets and gyms.



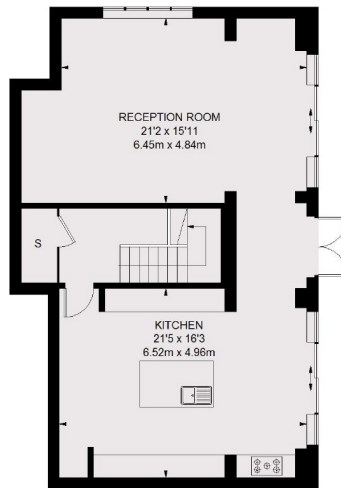




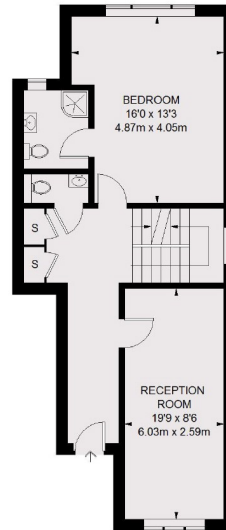
SECOND FLOOR



FIRST FLOOR



LOWER
GROUND FLOOR



UPPER
GROUND FLOOR

TOTAL APPROX. FLOOR AREA
(EXCLUDING EAVES)
2462 SQ. FT. (228.69 SQ. M.)

Jacksons Streatham
1-3 De Montfort Parade
Streatham High Road
Streatham
London
SW16 1BU

Energy Rating: C We aim to make our particulars both accurate and reliable. However they are not guaranteed; nor do they form part of an offer or contract. If you require clarification on any points then please contact us, especially if you're traveling some distance to view. Please note that appliances and heating systems have not been tested and therefore no warranties can be given as to their good working order.