



STREATHAM HIGH ROAD, SW16

£350,000

- Spacious throughout (869 sq ft)
- Private balcony
- Streatham Hill location
- Close to transport links
- Wide array of local amenities
- Energy rating: B



1



1



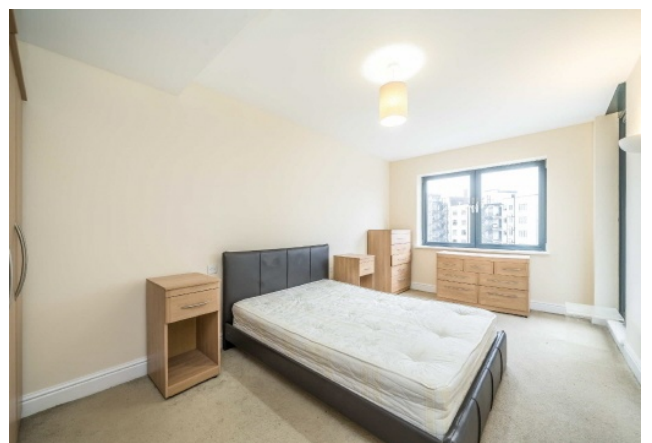
2



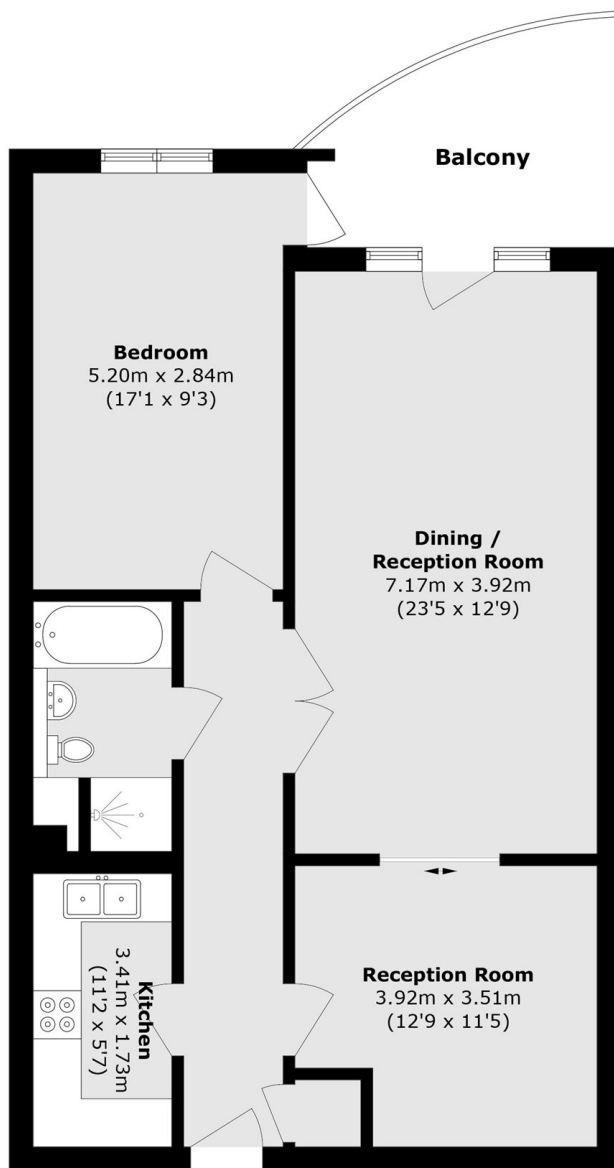
ABOUT THE HOME

A bright and exceptionally spacious one-bedroom apartment located in the unique Picture House development on Streatham High Road. This wonderful property benefits from generous living space, a private balcony and offers immediate access to the best of Streatham and Streatham Hill.

Situated on Streatham High Road the incoming purchaser will enjoy ease of access to the wide range of amenities the area has to offer. Commuters will benefit from one of the many buses down to Brixton and beyond. Streatham Hill station is a short walk away offering easy access into London Victoria, London Bridge, Clapham Junction and many more.







Total area (approx.): 80.8 sq. m (869.7 sq. ft)

Balcony area (approx.): 9.1 sq. m (97.9 sq. ft)

JACKSONS STREATHAM

1-3 De Montfort Parade,
Streatham High Road,
Sales: 020 8487 3179
Lettings: 020 8487 3180

Energy Rating: B We aim to make our particulars both accurate and reliable. However they are not guaranteed; nor do they form part of an offer or contract. If you require clarification on any points then please contact us, especially if you're traveling some distance to view. Please note that appliances and heating systems have not been tested and therefore no warranties can be given as to their good working order.