



## LEITHCOTE GARDENS, SW16

£695,000

- Off-street parking
- Three bedroom
- Excellent condition
- Quiet popular road
- Two bathrooms
- Energy rating: C





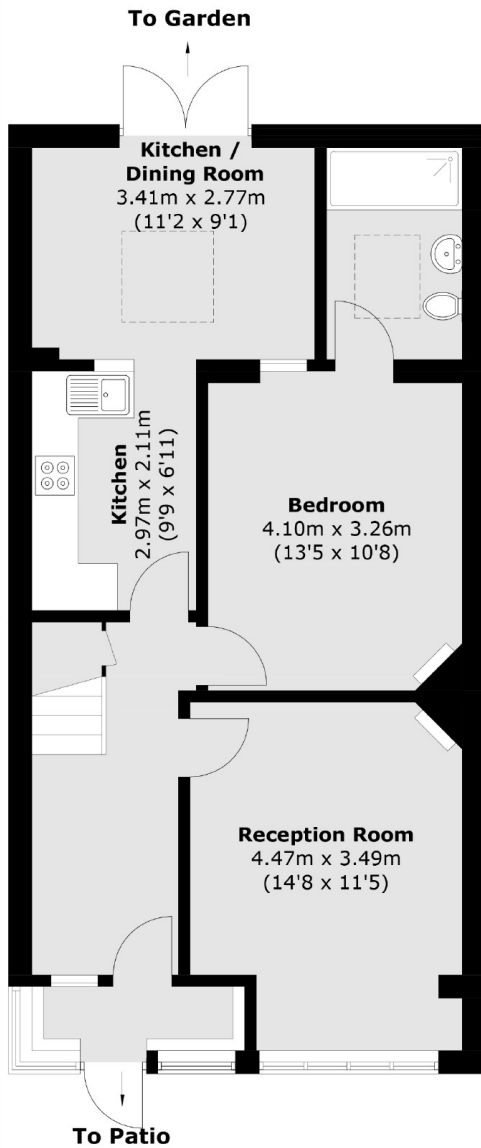
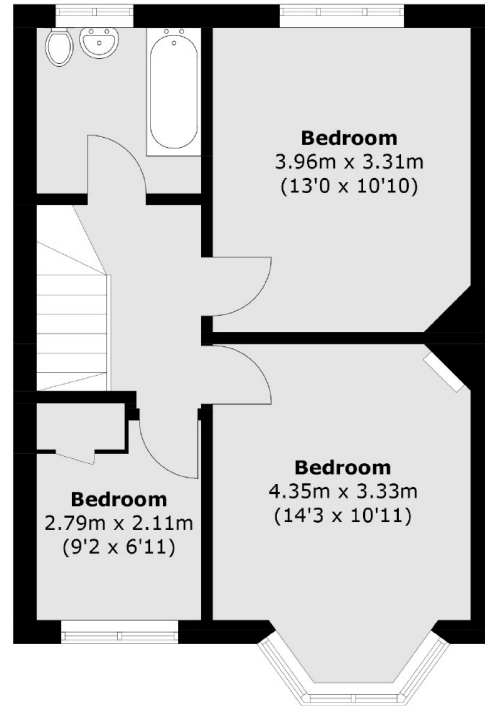
## ABOUT THE HOME

A mid-terraced house comprising of three spacious bedrooms, located in a desirable location. The property is in great condition with potential to further extend.

Located on a quiet residential road but within close proximity to Streatham Hill train station and the many shops, bars and restaurants along Streatham High Road.






**Ground Floor**

**First Floor**

Total area (approx.): 108.0 sq. m (1162.4 sq. ft)

**JACKSONS STREATHAM**

1-3 De Montfort Parade,  
Streatham High Road,  
Sales: 020 8487 3179  
Lettings: 020 8487 3180

Energy Rating: C We aim to make our particulars both accurate and reliable. However they are not guaranteed; nor do they form part of an offer or contract. If you require clarification on any points then please contact us, especially if you're traveling some distance to view. Please note that appliances and heating systems have not been tested and therefore no warranties can be given as to their good working order.