



## Streatham High Road, SW16

£1,600 PCM

A two bedroom apartment situated opposite Streatham Common in the popular Derry Court development.

- Two bedrooms
- Two bathrooms
- Private balcony
- Private parking space
- No Onward Chain
- Long Lease

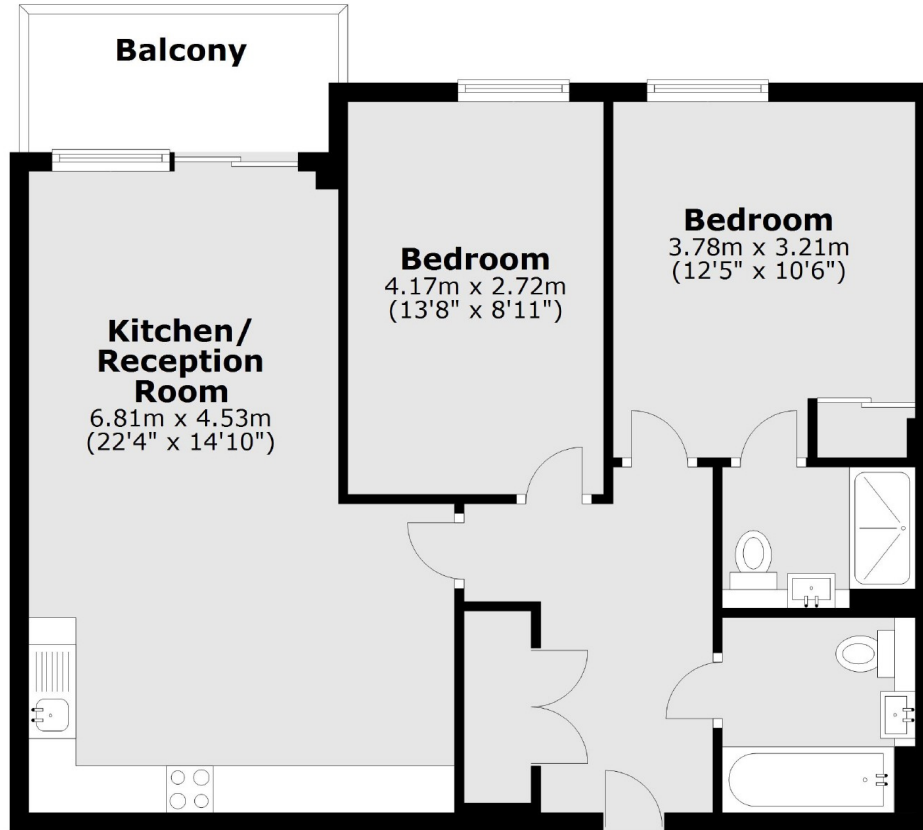
For further information on the costs associated with renting a property, please pop into our office or visit our website.



Derry Court is a modern development, featuring a concierge, superstore, nearby leisure centre. The development is within close proximity of Streatham Mainline Station and Streatham Common Station, with swift links to Blackfriars and London Bridge and London Victoria via Clapham Junction respectively.



---

**Fourth Floor**

**Main area: Approx. 68.6 sq. metres (738.7 sq. feet)**

Plus balconies, approx. 4.7 sq. metres (50.9 sq. feet)

Jacksons Corporate Services  
388 Chiswick High Road  
Chiswick  
London  
W4 5TF

Energy Rating: We aim to make our particulars both accurate and reliable. However they are not guaranteed; nor do they form part of an offer or contract. If you require clarification on any points then please contact us, especially if you're traveling some distance to view. Please note that appliances and heating systems have not been tested and therefore no warranties can be given as to their good working order.