



Mount Nod Road, SW16

£499,950

A well presented large two bedroom converted flat on a residential road near Streatham Hill. The property is located nearby several train stations, is in good condition and is being sold chain free.

- Victorian Converted Flat
- Two Large Double Bedrooms
- Two Bathrooms
- Chain Free
- Good Condition
- Open Plan Kitchen Living

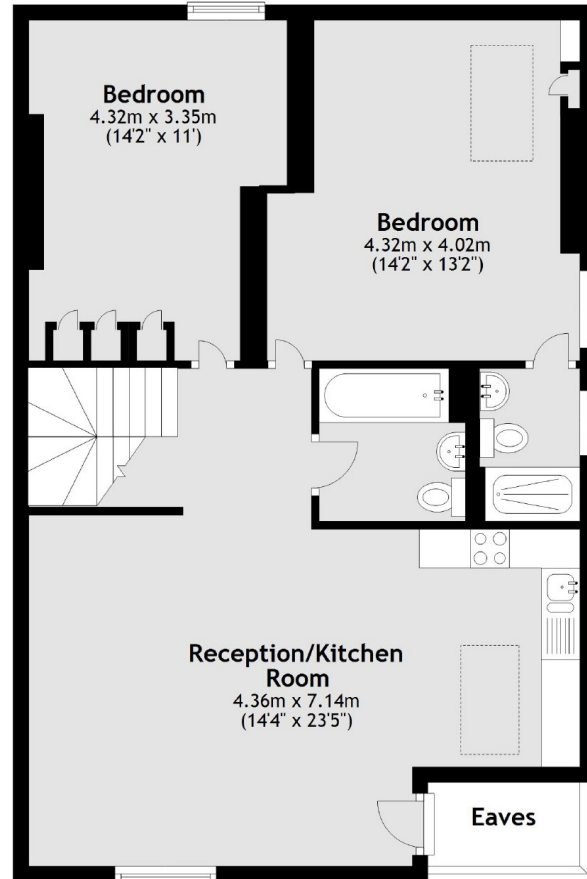
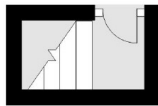


Mount Nod Road is a wide tree lined residential road of mainly Victorian houses and is very well placed for access to Streatham Hill. The amenities of the area include many bars, independent coffee shops, restaurants, several large supermarkets, leisure centre, health clubs and both high street and independent retailers. Streatham Common itself and multiple transport links including three train stations and numerous bus routes leading into London, are also close at hand.



Second Floor

First Floor



Total area: approx. 76.8 sq. metres (826.6 sq. feet)

Jacksons Streatham
1-3 De Montfort Parade
Streatham High Road
Streatham
London
SW16 1BU

Energy Rating: C We aim to make our particulars both accurate and reliable. However they are not guaranteed; nor do they form part of an offer or contract. If you require clarification on any points then please contact us, especially if you're traveling some distance to view. Please note that appliances and heating systems have not been tested and therefore no warranties can be given as to their good working order.