



WELLFIELD ROAD, SW16

£750,000

- Four Bedrooms
- Two Bathrooms
- Kitchen Diner
- South facing garden
- Two Receptions
- Energy rating: D





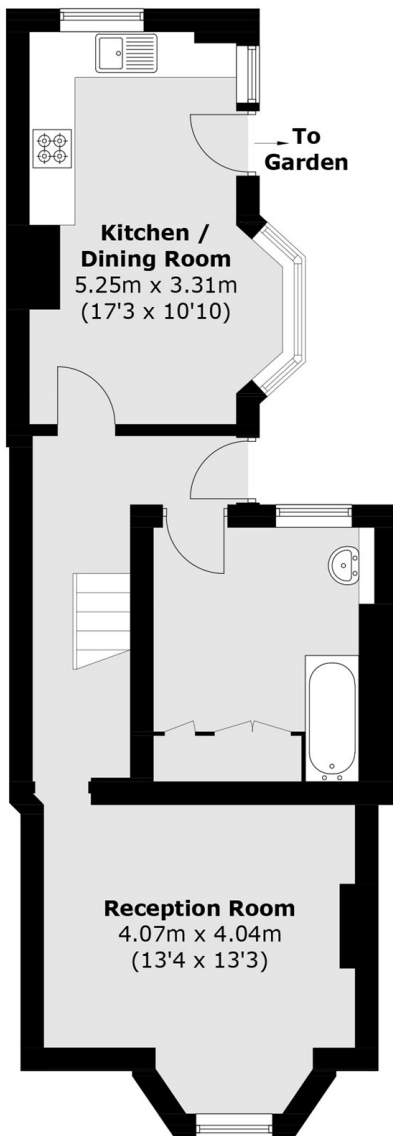
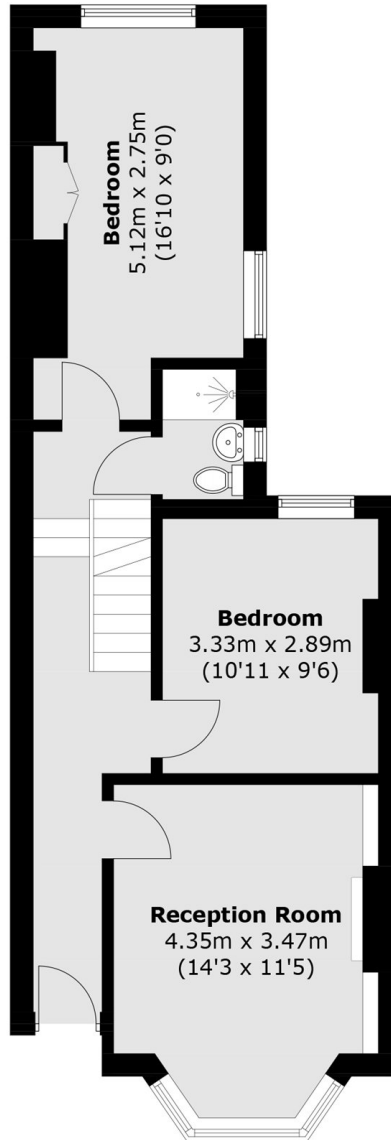
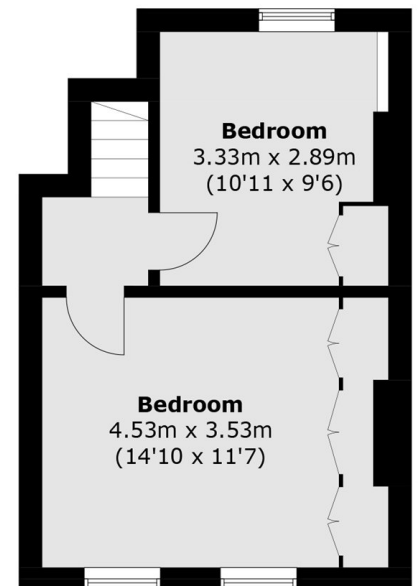
ABOUT THE HOME

A well presented four bed Victorian terraced house, offering accommodation over three floors and a desirable south facing garden. The property is perfectly positioned for quick access to the high street, and equidistance from Streatham & Streatham Hill railway stations.

Wellfield Road is well located for the local amenities that Streatham has to offer including an array of bars, restaurants, supermarkets and the new Streatham Hub development. Streatham station offers a Thames Link service into the city and there are multiple bus services available.






Lower Ground Floor

Ground Floor

First Floor

Total area (approx.): 129.0sq. m (1,388.5 sq. ft)

JACKSONS STREATHAM

1-3 De Montfort Parade,
Streatham High Road,
Sales: 020 8487 3179
Lettings: 020 8487 3180

Energy Rating: D We aim to make our particulars both accurate and reliable. However they are not guaranteed; nor do they form part of an offer or contract. If you require clarification on any points then please contact us, especially if you're traveling some distance to view. Please note that appliances and heating systems have not been tested and therefore no warranties can be given as to their good working order.