



## London Road, SW16

£1,600 PCM

A large top floor two double bedroom, two bathroom split level apartment with a private balcony. The property includes an allocated parking space and there is an onsite gym and concierge service at the

- Split Level Apartment
- Water Rates Included
- Allocated Parking Space
- Onsite Gym
- Ensuite Bathrooms To Both Bedrooms
- Close to Many Amenities

For further information on the costs associated with renting a property, please pop into our office or visit our website.



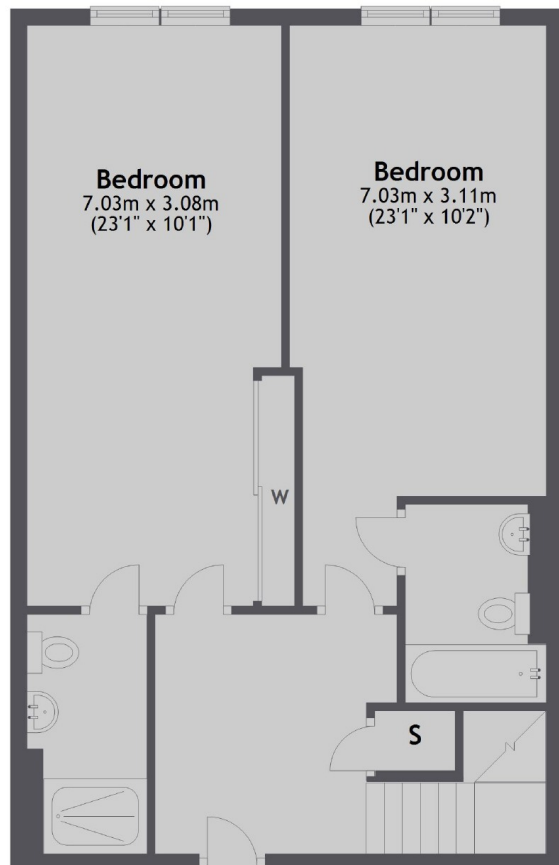
Anderson Heights is a modern development located near the vast array of shops, restaurants and bars in Norbury. There is a swift train service to both London Victoria and London Bridge from Norbury train station.



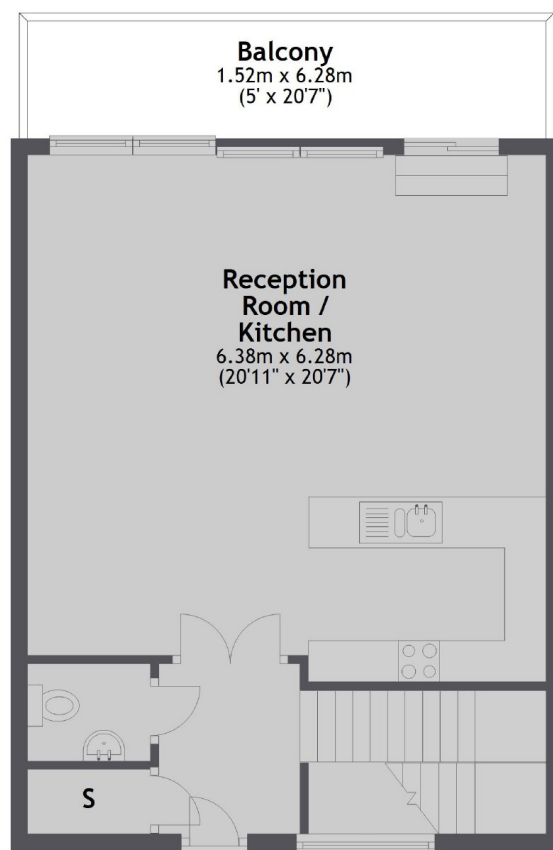




### Fourth Floor



### Fifth Floor



Total area: approx. 114.8 sq. metres (1235.3 sq. feet)

Jacksons Streatham  
1-3 De Montfort Parade  
Streatham High Road  
Streatham  
London  
SW16 1BU

Energy Rating: D We aim to make our particulars both accurate and reliable. However they are not guaranteed; nor do they form part of an offer or contract. If you require clarification on any points then please contact us, especially if you're traveling some distance to view. Please note that appliances and heating systems have not been tested and therefore no warranties can be given as to their good working order.