

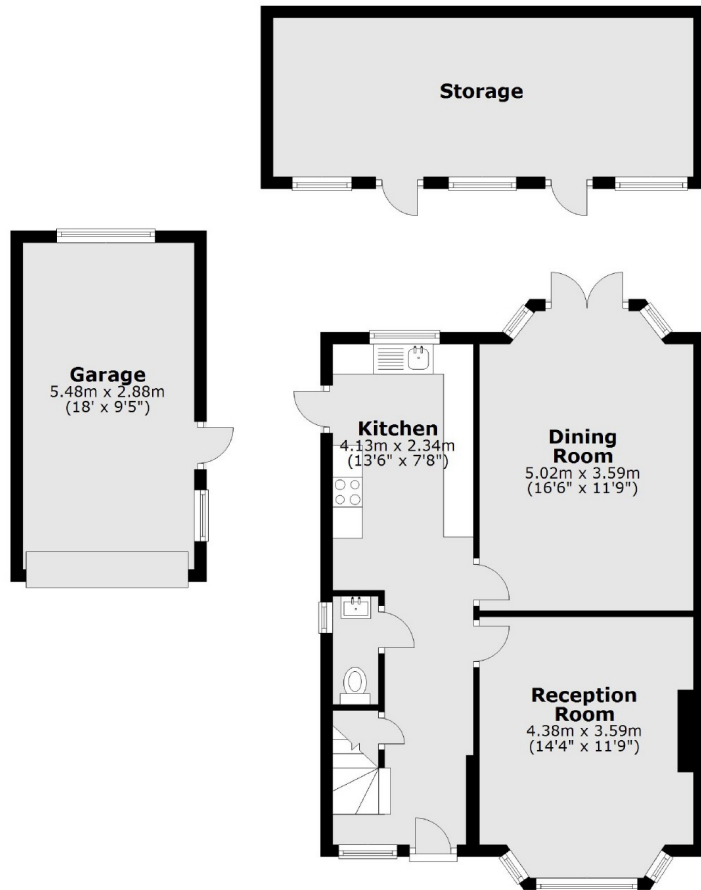
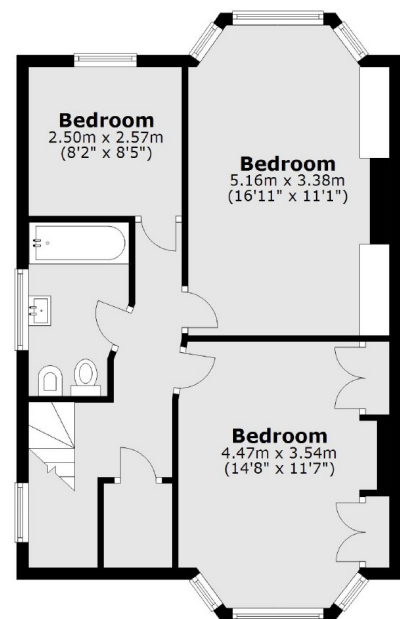


**Christian Fields, SW16**

**£3,250 PCM**





**Ground Floor**

**First Floor**


Main area: Approx. 107.5 sq. metres (1157.3 sq. feet)

Plus garages, approx. 15.8 sq. metres (169.8 sq. feet)  
Plus outbuildings, approx. 18.8 sq. metres (202.5 sq. feet)

Jacksons Streatham  
1-3 De Montfort Parade  
Streatham High Road  
Streatham  
London  
SW16 1BU

Energy Rating: We aim to make our particulars both accurate and reliable. However they are not guaranteed; nor do they form part of an offer or contract. If you require clarification on any points then please contact us, especially if you're traveling some distance to view. Please note that appliances and heating systems have not been tested and therefore no warranties can be given as to their good working order.