



HOLMEWOOD GARDENS, SW2

£575,000

- Victorian conversion
- Private garden
- Original features throughout
- High spec interior
- Excellent transport links
- Energy rating:





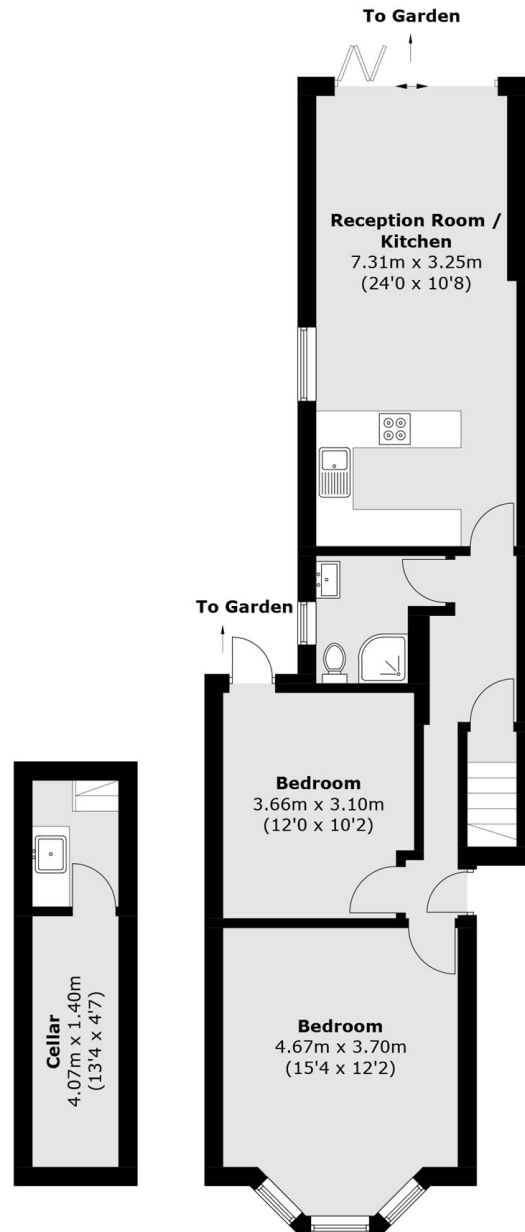
ABOUT THE HOME

A beautifully presented ground floor garden flat situated in a lovely Victorian conversion. This wonderful home comprises two double bedrooms, open plan living, a sizeable cellar as well as a very well presented private garden.

Holmewood Gardens is a quiet residential road which triangulates around a beautiful park, featuring a children's playground, a large meadow and community orchard. Residents have nearby access to the wealth of amenities on Streatham High Road, the every popular Brixton Market and a range of outstanding local schools. Commuters have a number of options including the CityThameslink via Tulse, Hill, Streatham Hill Overground and a number of buses into the City via Brixton Station (Victoria Line).






Cellar
Ground Floor

Total area (approx.): 65.2 sq. m (701.8 sq. ft)
Cellar: 8.8 sq. m (94.7 sq. ft)

JACKSONS STREATHAM

1-3 De Montfort Parade,
Streatham High Road,
Sales: 020 8487 3179
Lettings: 020 8487 3180

Energy Rating: We aim to make our particulars both accurate and reliable. However they are not guaranteed; nor do they form part of an offer or contract. If you require clarification on any points then please contact us, especially if you're traveling some distance to view. Please note that appliances and heating systems have not been tested and therefore no warranties can be given as to their good working order.