



PATHFIELD ROAD, SW16

£495,000

- Top level flat
- Separate galley kitchen
- Low communal costs
- Close to transport
- Share of freehold
- Energy rating: D



2



1



1



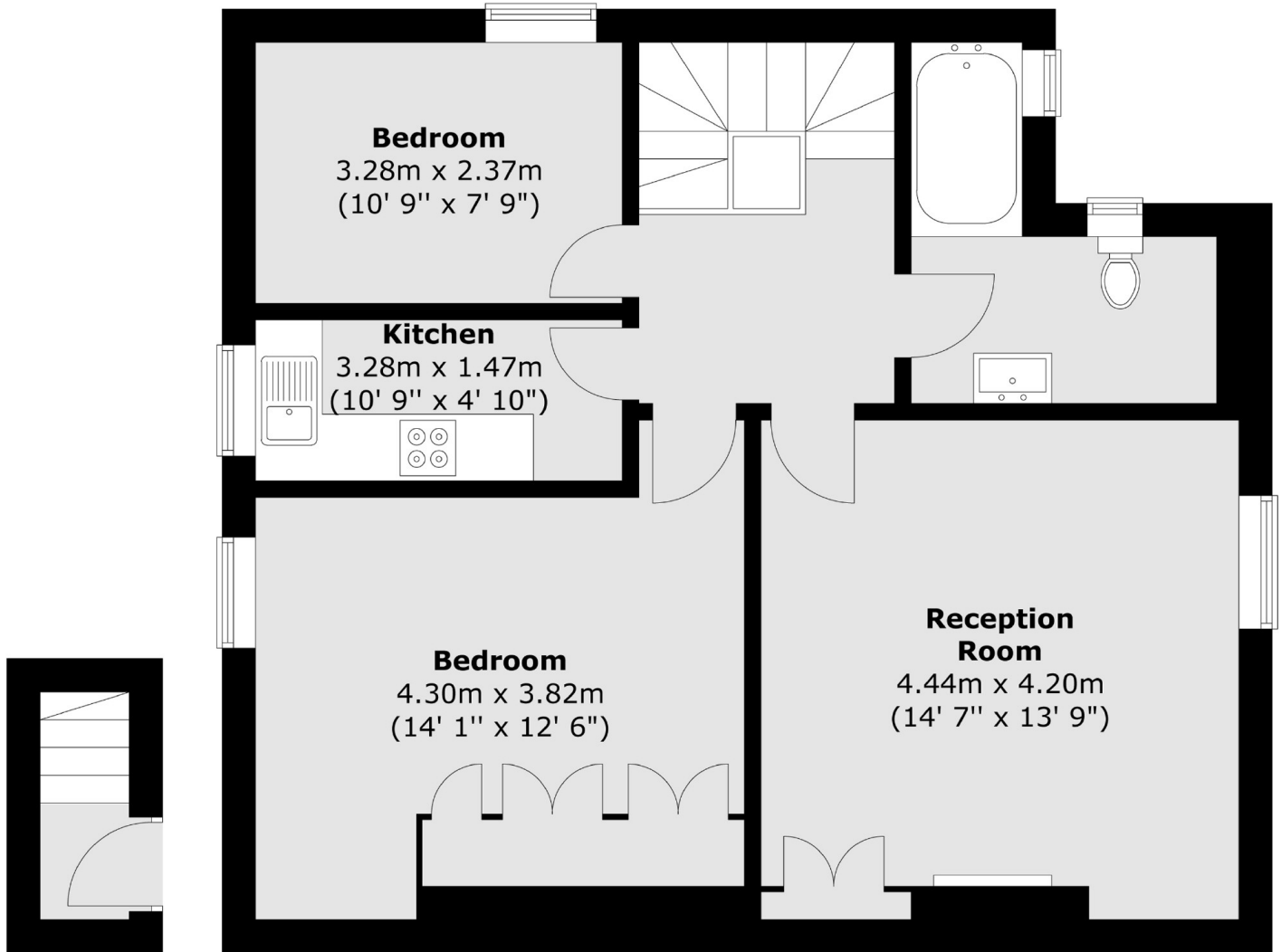
ABOUT THE HOME

A lovely two-bedroom Victorian conversion, benefitting from a private garden and an abundance of internal space. This property is located just moments from Streatham Common Station that can get directly to Victoria in 20 minutes and London Bridge in 30 minutes.

Pathfield Road is a sought after period road located next to Streatham Common Station, offering excellent transport links via Thameslink and direct railway services to London Victoria. Local amenities are numerous and include a variety of restaurants, coffee shops, bars and retailers.






First Floor
Second Floor

Total area (approx.) : 68.3 sq. m (735 sq. ft)

JACKSONS STREATHAM

1-3 De Montfort Parade,
Streatham High Road,
Sales: 020 8487 3179
Lettings: 020 8487 3180

Energy Rating: D We aim to make our particulars both accurate and reliable. However they are not guaranteed; nor do they form part of an offer or contract. If you require clarification on any points then please contact us, especially if you're traveling some distance to view. Please note that appliances and heating systems have not been tested and therefore no warranties can be given as to their good working order.