



WOODBOURNE AVENUE, SW16

£650,000

- Edwardian conversion
- Two bedroom
- Off-street parking
- Large garden
- Excellent condition
- Energy rating: D







## ABOUT THE HOME

A two double bedroom ground floor Edwardian garden flat offered to the market in excellent condition. This property comprises a large reception room with french doors leading to a private south facing garden.

There is also a share of the front garden and side access.

Woodbourne Avenue is one of the most sought after Roads in Streatham. Streatham Hill and Streatham railway stations are both within a short walking distance as are the beautiful open spaces that Tooting Bec common has to offer.

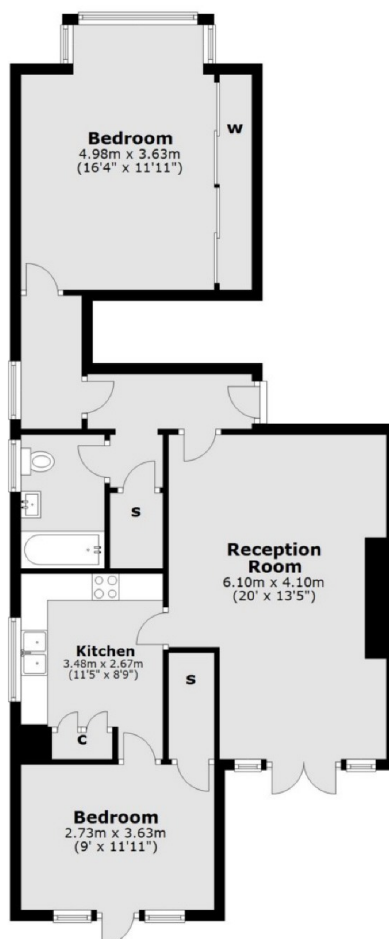








### Ground Floor



Total area: approx. 78.8 sq. metres (848.0 sq. feet)

### JACKSONS STREATHAM

1-3 De Montfort Parade,  
Streatham High Road,  
Sales: 020 8487 3179  
Lettings: 020 8487 3180

Energy Rating: D We aim to make our particulars both accurate and reliable. However they are not guaranteed; nor do they form part of an offer or contract. If you require clarification on any points then please contact us, especially if you're traveling some distance to view. Please note that appliances and heating systems have not been tested and therefore no warranties can be given as to their good working order.