



London Road, SW16

£1,450 PCM

A two double bedroom, two bathroom modern apartment which benefits from an allocated parking space, concierge service, on-site gym and communal roof terrace.

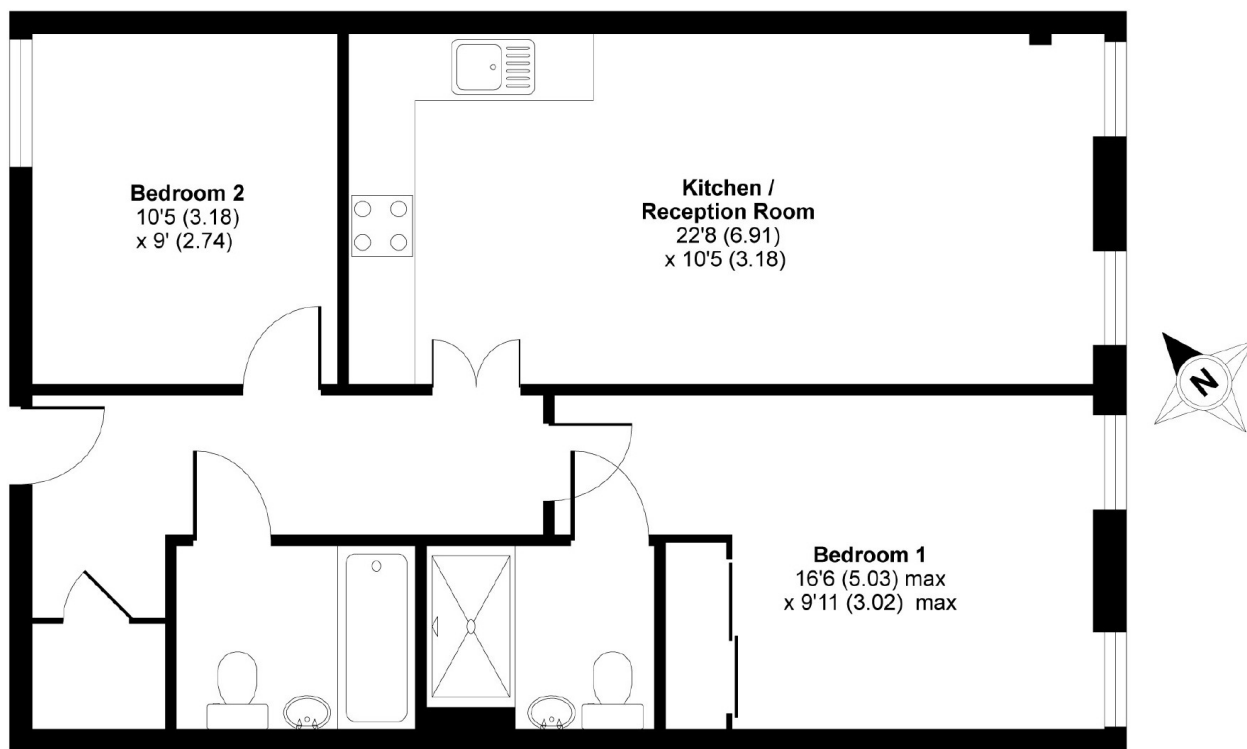
- First Floor Apartment
- Double Bedrooms
- Two Bathrooms
- Secure Parking
- On-Site Gym
- Convenient Location

For further information on the costs associated with renting a property, please pop into our office or visit our website.



Anderson Heights is a popular development located near the shops, restaurants and bars in Norbury. There is a swift train service to both London Victoria and London Bridge from Norbury train station.





FIRST FLOOR

APPROX. GROSS INTERNAL FLOOR AREA 670 SQ FT 62.2 SQ METRES

Anderson Heights, London Road, London, SW16

Copyright nichecom.co.uk 2014 Produced for Jacksons the Independent Estate Agents REF : 655273

Jacksons Streatham
1-3 De Montfort Parade
Streatham High Road
Streatham
London
SW16 1BU

Energy Rating: C We aim to make our particulars both accurate and reliable. However they are not guaranteed; nor do they form part of an offer or contract. If you require clarification on any points then please contact us, especially if you're traveling some distance to view. Please note that appliances and heating systems have not been tested and therefore no warranties can be given as to their good working order.