



KIRKSTALL ROAD, SW2

£595,000

- Victoria conversion
- Off street parking
- Large private garden
- Two double bedroom
- High spec finish
- Energy rating: D







## ABOUT THE HOME

A beautifully presented, two double bedroom, Victorian ground floor garden flat situated in the highly sought after Telford Park Conservation Area. The garden has the luxury of having the entirety of the garden, which would normally be for a large Kirkstall House.

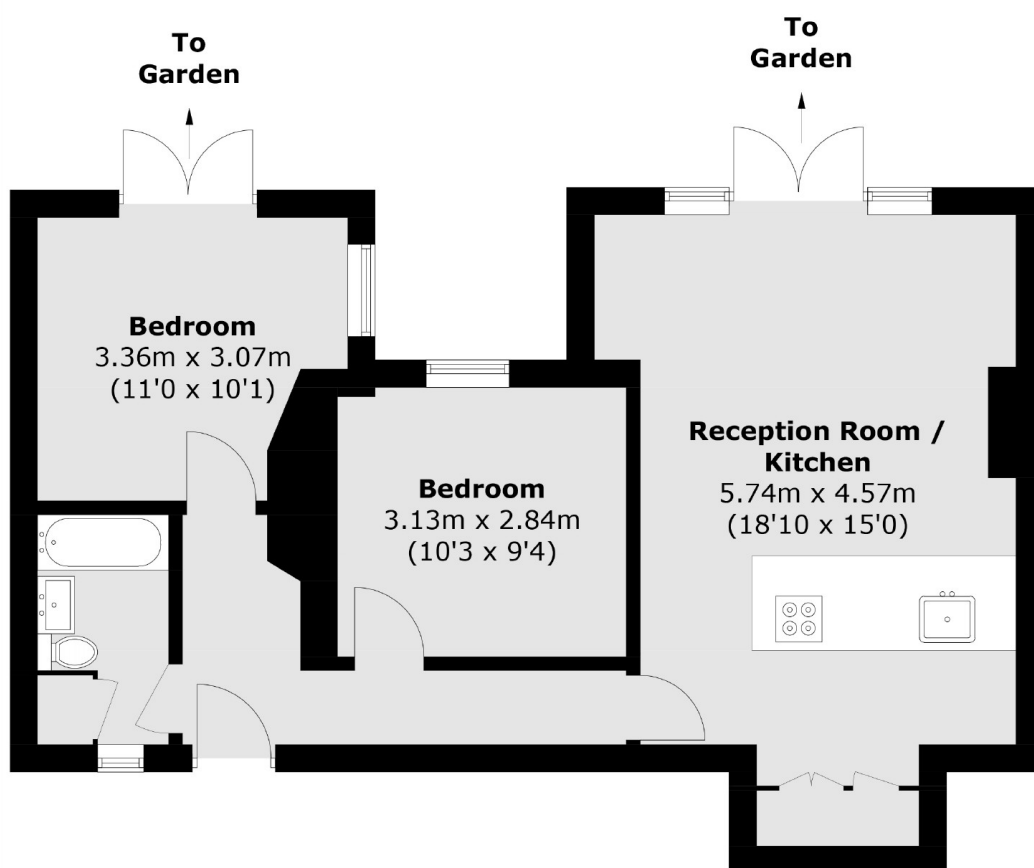
Kirkstall Road is a quiet tree lined road situated within close proximity of Balham and Streatham Hill. The Telford Park Conservation area is one of Streatham and Balham's most sought after neighbourhoods. These stunning red brick Victorian buildings have some of the largest gardens you will find in the local area. Telford Park is known for its tennis club which hosts a number of events throughout the year for the local residents.











Total area (approx.): 58.3 sq. m (627.5 sq. ft)

#### JACKSONS STREATHAM

1-3 De Montfort Parade,  
Streatham High Road,  
Sales: 020 8487 3179  
Lettings: 020 8487 3180

Energy Rating: D We aim to make our particulars both accurate and reliable. However they are not guaranteed; nor do they form part of an offer or contract. If you require clarification on any points then please contact us, especially if you're traveling some distance to view. Please note that appliances and heating systems have not been tested and therefore no warranties can be given as to their good working order.