



WOLFINGTON ROAD, SE27

£500,000

- Victorian split level conversion
- Two double bedrooms
- Central location
- Share of freehold
- 950 sq. ft
- Energy rating: D



2



1



1





## ABOUT THE HOME

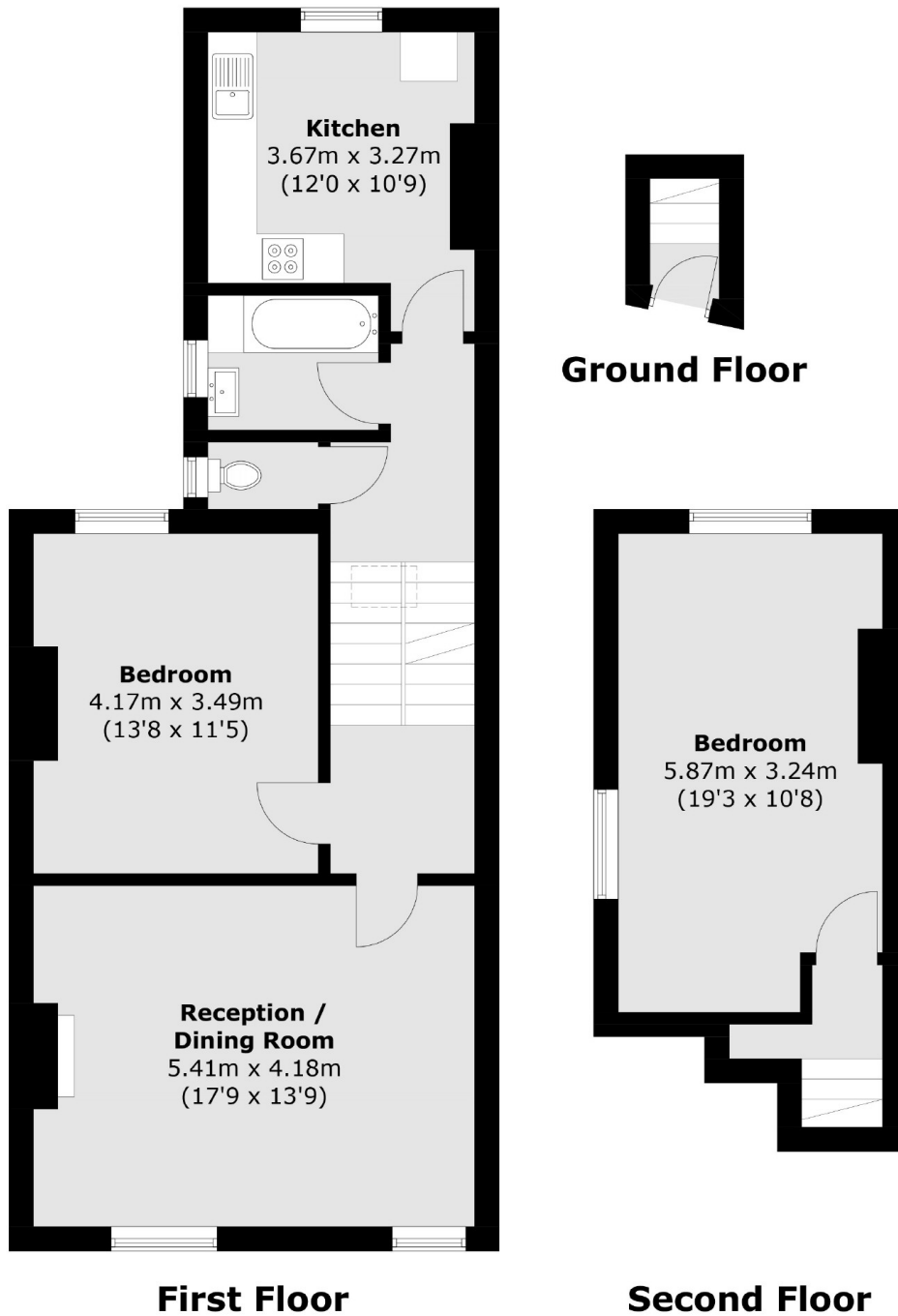
A spacious split level Victorian conversion apartment located on a popular road in West Norwood located just a short distance from the high street. The property has been well maintained by the current owners and benefits from 950 sq. Ft of living space.

Wolffington Road is a quite residential road which connects to Knights Hill at the base of West Norwood High Street. Residents have the benefit of access to a wide range of local amenities including a number of independent shops, bars and restaurants in addition to the Picture House Cinema which shares it's home with West Norwood Library. There are a range of useful transport links including the Southern via West Norwood, the Thameslink via Tulse Hill and a number of regular bus routes into the City via Brixton and the Victoria Underground line.









Total area (approx.): 88.3 sq. m (950.5 sq. ft)

#### JACKSONS STREATHAM

1-3 De Montfort Parade,  
Streatham High Road,  
Sales: 020 8487 3179  
Lettings: 020 8487 3180

Energy Rating: We aim to make our particulars both accurate and reliable. However they are not guaranteed; nor do they form part of an offer or contract. If you require clarification on any points then please contact us, especially if you're traveling some distance to view. Please note that appliances and heating systems have not been tested and therefore no warranties can be given as to their good working order.