



LEIGHAM COURT ROAD, SW16

£2,250,000

- Detached family home
- 4388 sq. ft
- Five double bedrooms
- Carriage driveway
- 200ft landscaped garden
- Energy rating: D





ABOUT THE HOME

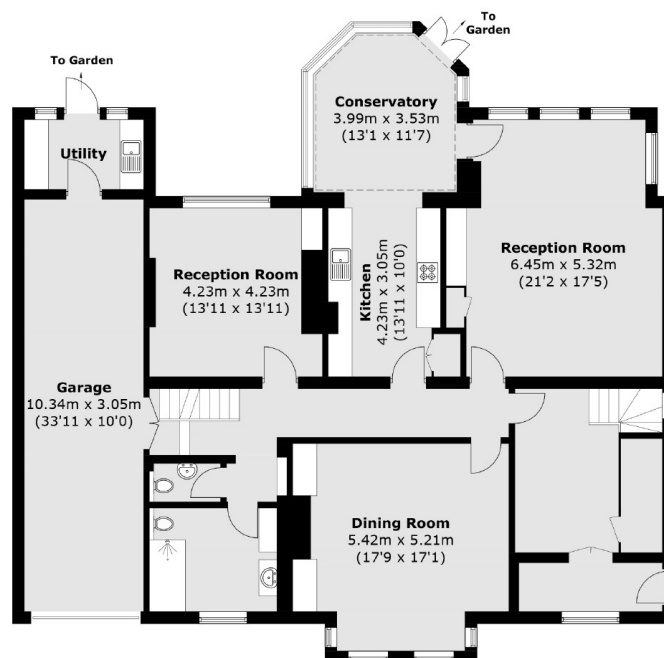
An imposing, detached Gothic Revival family home built c.1860, located just moments from Streatham Common. Having been passed down three generations, the property has been carefully maintained whilst retaining the overwhelming majority of original features. Boasting 4388 sqft, living accommodation comprises five double bedrooms, three reception rooms and a kitchen/diner with glass conservatory leading directly out to a simply stunning, and beautifully mature 200ft garden.



Standing as one of the oldest Victorian family homes in the area, Leigham Court Road is ideally placed between Streatham Common and the former Thurlow Estate, today more commonly known as West Norwood. Residents have the benefit of access to the amenities of both areas, including a mix of independent and popular commercial establishments and wide range of outstanding state and private and state schools. There are a number of commuting options available including Streatham Hill Railway, West Norwood Railway and a number of regular bus routes into the City.






Cellar
First Floor

Ground Floor

Total area (approx.): 407.7 sq. m (4,388.4 sq. ft)
(Including Garage & Cellar)
(Excluding Void & Eaves)

JACKSONS STREATHAM

1-3 De Montfort Parade,
Streatham High Road,
Sales: 020 8487 3179
Lettings: 020 8487 3180

Energy Rating: D We aim to make our particulars both accurate and reliable. However they are not guaranteed; nor do they form part of an offer or contract. If you require clarification on any points then please contact us, especially if you're traveling some distance to view. Please note that appliances and heating systems have not been tested and therefore no warranties can be given as to their good working order.