



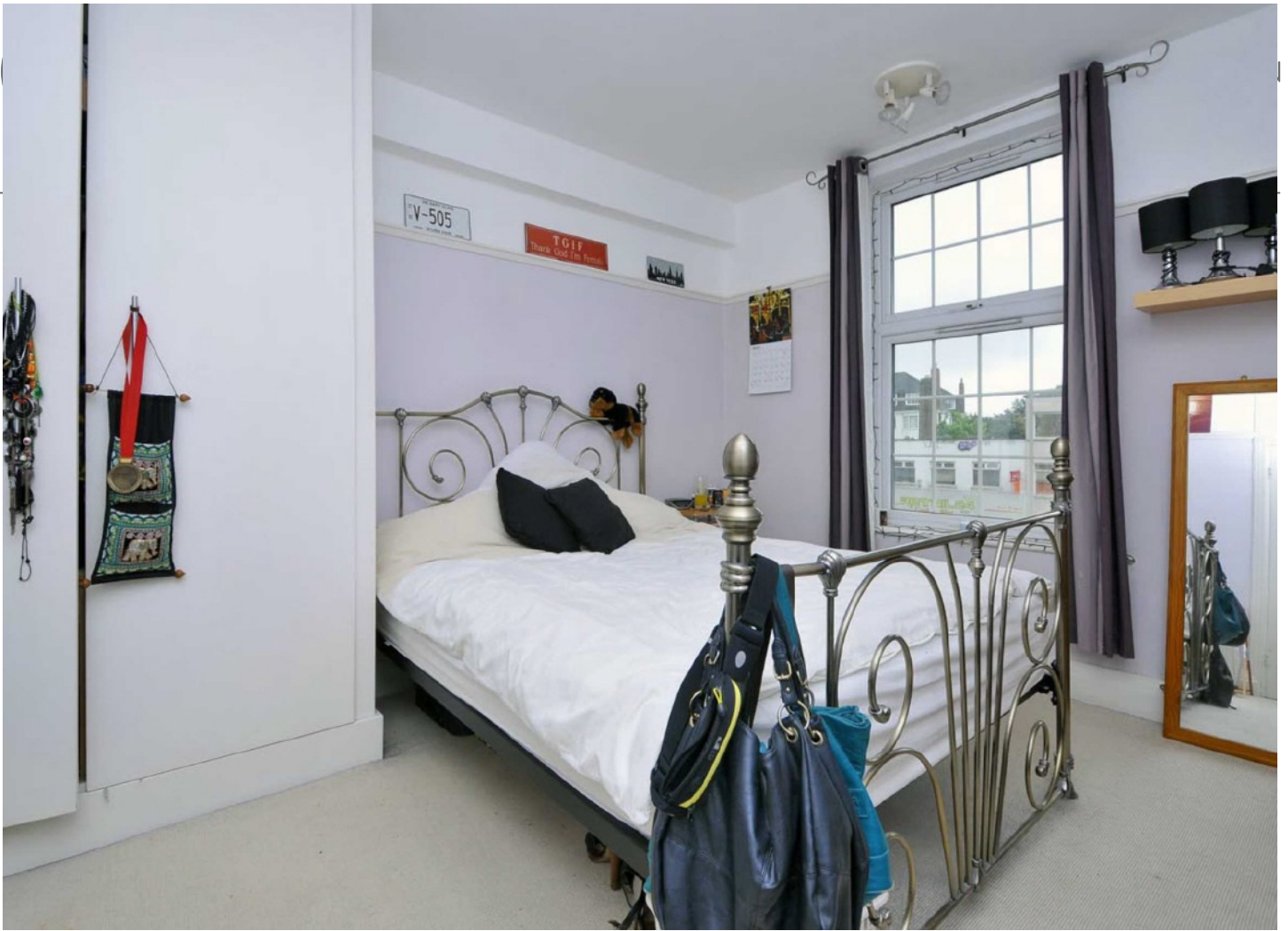
Streatham Hill, SW2

£2,250 PCM

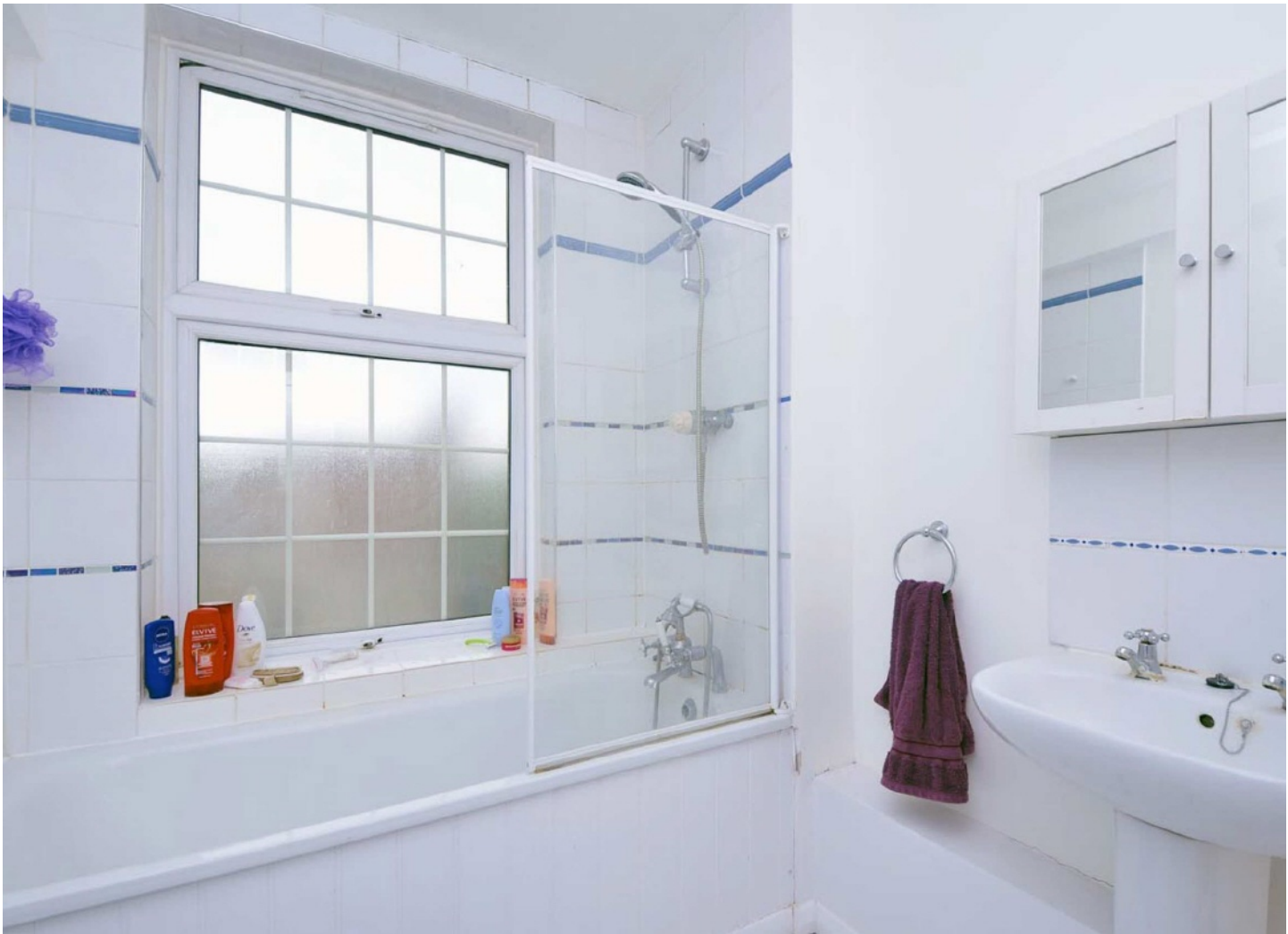
A three double bedroom 1930's Mansion flat ideal for three professionals and conveniently located close to Streatham Hill station. The property further benefits from a private balcony,

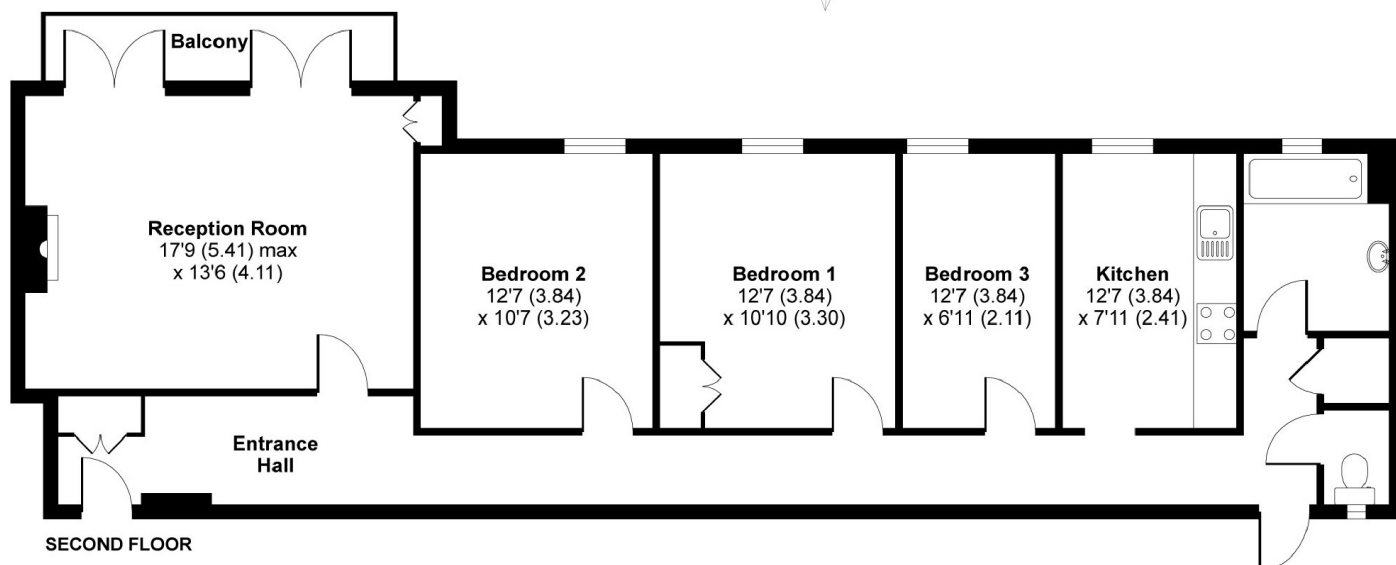
- Large Reception Room
- Three Double Bedrooms
- Private Balcony
- Allocated Parking
- Communal Garden
- Furnished

For further information on the costs associated with renting a property, please pop into our office or visit our website.



Telford Court is conveniently located close to Streatham Hill mainline station and is served by an array of bus routes to Brixton and beyond as well as many local shops and amenities.





APPROX. GROSS INTERNAL FLOOR AREA 1053 SQ FT 97.8 SQ METRES

Telford Court, Streatham Hill, London, SW2

Copyright nichecom.co.uk 2014 Produced for Jacksons the Independent Estate Agents REF : 564029

Jacksons Streatham
1-3 De Montfort Parade
Streatham High Road
Streatham
London
SW16 1BU

Energy Rating: C We aim to make our particulars both accurate and reliable. However they are not guaranteed; nor do they form part of an offer or contract. If you require clarification on any points then please contact us, especially if you're traveling some distance to view. Please note that appliances and heating systems have not been tested and therefore no warranties can be given as to their good working order.