



## Leigham Court Road, SW16

£1,750 PCM

A one bedroom period converted flat. This property benefits from its excellent condition, has off-street parking, and a beautiful private garden.

- One bedroom
- Private garden
- Excellent condition
- Off-street parking
- Streatham Hill
- Energy rating: D

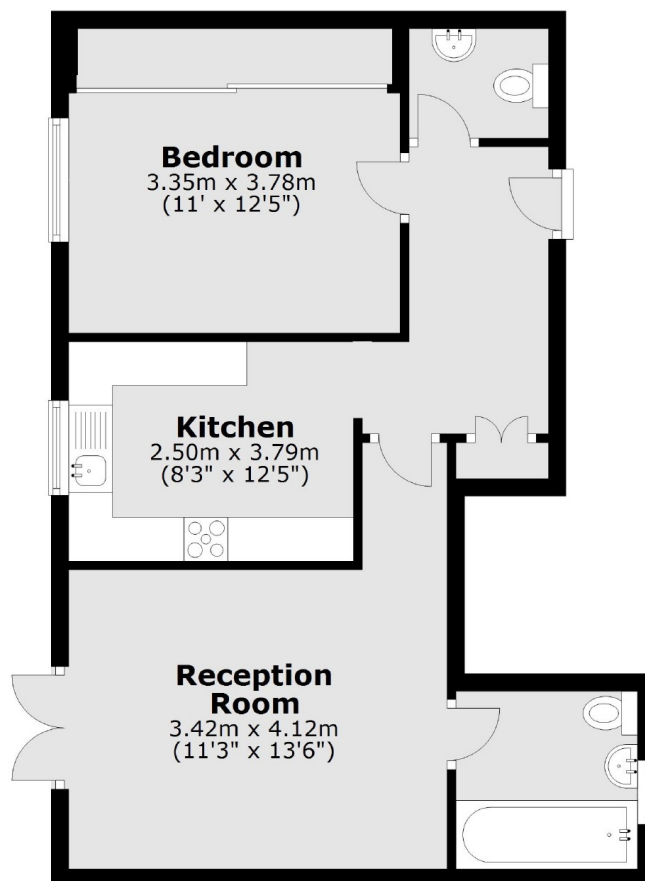
For further information on the costs associated with renting a property, please pop into our office or visit our website.



Leigham Court Road is well located for all the amenities of the surrounding area including many bars, independent coffee shops, restaurants, large supermarkets, leisure centre and health clubs. Streatham Hill and Tulse Hill mainline stations with links to Clapham Junction, Victoria, London Bridge and a number of other locations are also close by. The property is also conveniently situated within the catchment areas of Dunraven School and Hitherfield Primary School.







Total area: approx. 51.9 sq. metres (558.4 sq. feet)

Jacksons Streatham  
1-3 De Montfort Parade  
Streatham High Road  
Streatham  
London  
SW16 1BU

Energy Rating: D We aim to make our particulars both accurate and reliable. However they are not guaranteed; nor do they form part of an offer or contract. If you require clarification on any points then please contact us, especially if you're traveling some distance to view. Please note that appliances and heating systems have not been tested and therefore no warranties can be given as to their good working order.