



ROCKHAMPTON CLOSE, SE27

£775,000

- Terraced house
- Three bedrooms
- Extension potential
- Large private garden
- Quiet residential cul-de sac
- Energy rating: E





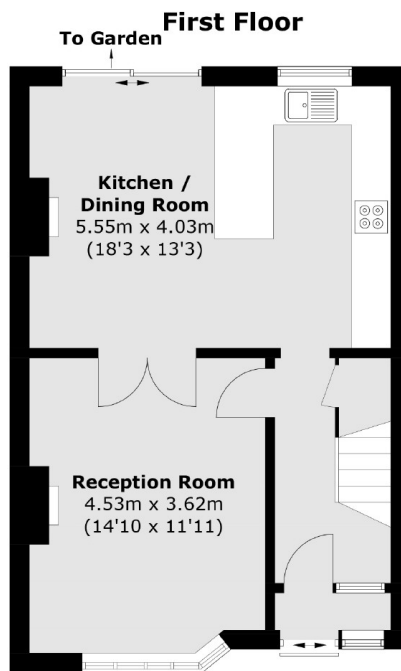
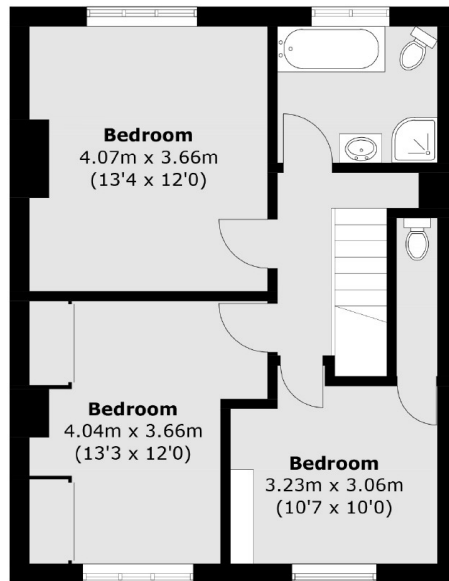
## ABOUT THE HOME

A lovely family three bed family home with generously proportioned rooms and excellent natural light, with one family bathroom and two toilets. The property has a large South-West facing garden and is close to many excellent secondary and primary schools, within easy reach to transport links and local Parks.

Rockhampton Close is located on the borders of West Norwood and Streatham Hill and provides easy access to several overground stations including West Norwood and Streatham Hill with links to London Victoria, and Tulse Hill mainline station which offers services via Thameslink. West Norwood High Street and Streatham High Road are a stone's throw away with their vast array of transport links, shopping and leisure amenities.







**Ground Floor**

Total area (approx.): 99.6 sq. m (1,072.1 sq. ft)

#### JACKSONS STREATHAM

1-3 De Montfort Parade,  
Streatham High Road,  
Sales: 020 8487 3179  
Lettings: 020 8487 3180

Energy Rating: We aim to make our particulars both accurate and reliable. However they are not guaranteed; nor do they form part of an offer or contract. If you require clarification on any points then please contact us, especially if you're traveling some distance to view. Please note that appliances and heating systems have not been tested and therefore no warranties can be given as to their good working order.