



GLENELDON ROAD, SW16

£625,000

- Victorian conversion
- Two double bedrooms
- Large private garden
- Open plan kitchen diner
- Chain free
- Energy rating: D







## ABOUT THE HOME

A stunning two bedroom Victorian conversion garden flat, boasting 1105 sq.ft of living space. The property has been extended and modernised to a very high standard whilst retaining a wealth of original features throughout.

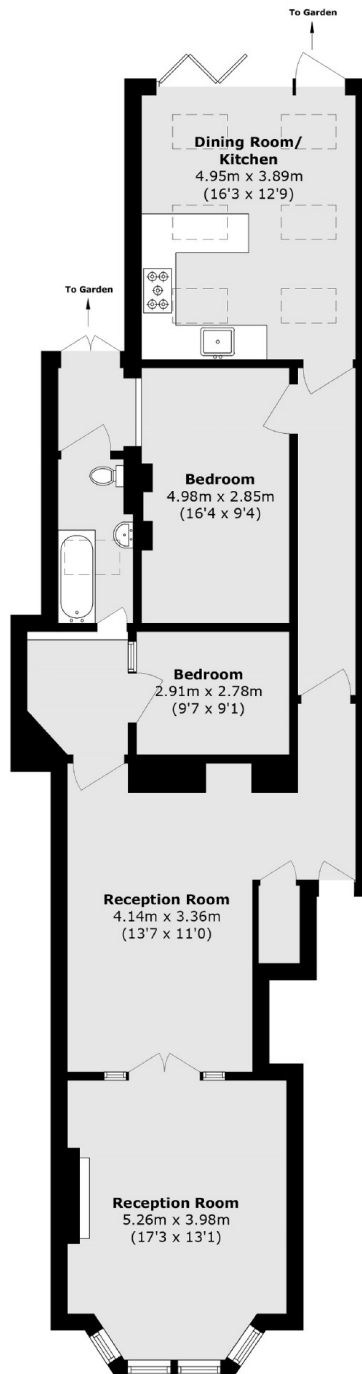
Gleneldon Road is a popular residential road which connects Streatham High Road and Streatham Common. Residents have the benefit of access to the range of independent shops, bars and restaurants of Streatham High Road as well as a number of commercial establishments including an M&S foodhall, leisure centre and cinema. There are a number of great transport links including the Thameslink via Streatham, the Southern via Streatham Common and a number of regular bus routes into the City via Brixton.











Total area (approx.): 102.7 sq. m (1105.4 sq. ft)

### JACKSONS STREATHAM

1-3 De Montfort Parade,  
 Streatham High Road,  
 Sales: 020 8487 3179  
 Lettings: 020 8487 3180

Energy Rating: D We aim to make our particulars both accurate and reliable. However they are not guaranteed; nor do they form part of an offer or contract. If you require clarification on any points then please contact us, especially if you're traveling some distance to view. Please note that appliances and heating systems have not been tested and therefore no warranties can be given as to their good working order.