



## Kingscourt Road, SW16

£3,600 PCM

A four bedroom Victorian house set on a desirable residential road with a south facing garden. This property is in excellent condition, maintaining its period qualities with a modern finish.

- Victorian house
- Four bedrooms
- South facing garden
- Desirable location
- Excellent condition
- Energy rating: D

For further information on the costs associated with renting a property, please pop into our office or visit our website.



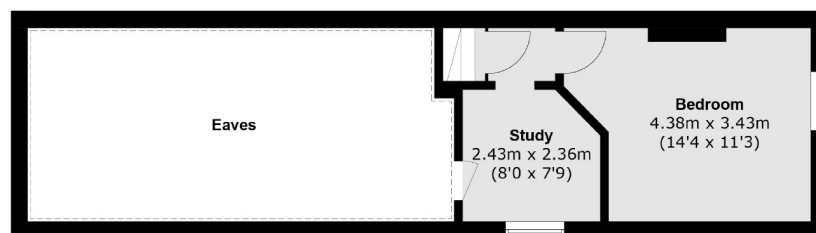
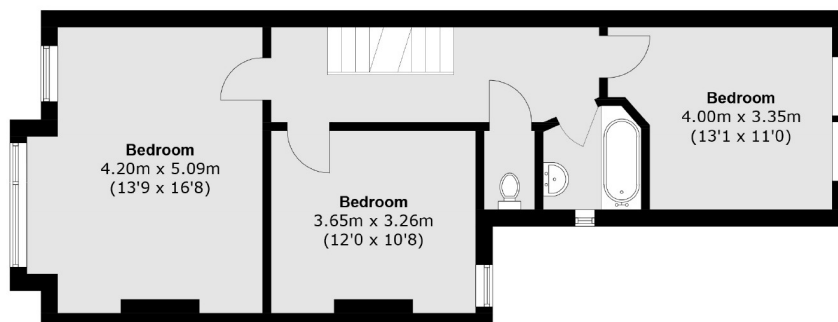
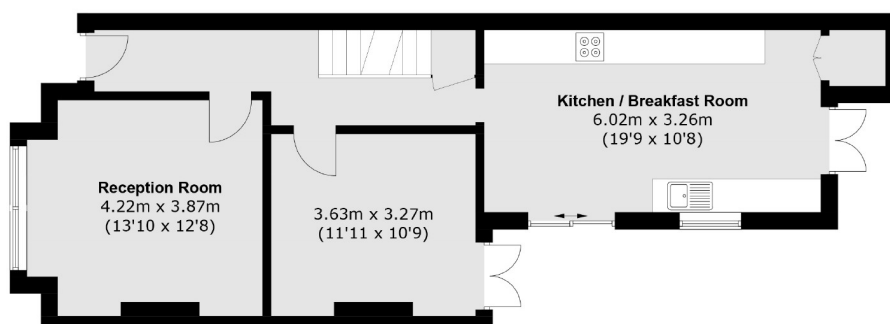


Split over two floors, providing double rooms with a study and space throughout.

Kingscourt Road is close to Tooting Common and the outstanding Henry Cavendish Primary School. Local amenities include several high street and independent retailers, cafés and coffee shops, numerous eateries, bars, a cinema, leisure centre and health clubs. Transport to Blackfriars via Streatham and London Victoria via Streatham Hill.






**Second Floor**

**First Floor**

**Ground Floor**

**Cellar**

Total area (approx.): 150.1 sq. m (1615.6 sq. ft)  
(Including Cellar / Excluding Eaves)

Jacksons Streatham  
1-3 De Montfort Parade  
Streatham High Road  
Streatham  
London  
SW16 1BU

Energy Rating: D We aim to make our particulars both accurate and reliable. However they are not guaranteed; nor do they form part of an offer or contract. If you require clarification on any points then please contact us, especially if you're traveling some distance to view. Please note that appliances and heating systems have not been tested and therefore no warranties can be given as to their good working order.