



## Polworth Road, SW16

£2,500 PCM

A good sized and well presented three bedroom ground floor conversion flat with a communal garden and off street parking. The property is ideal for three sharers and includes a large reception room, separate kitchen and

- Three Bedrooms
- Large Reception Room
- Modern Kitchen
- Communal Garden
- Off Street Parking
- Close To Streatham Common

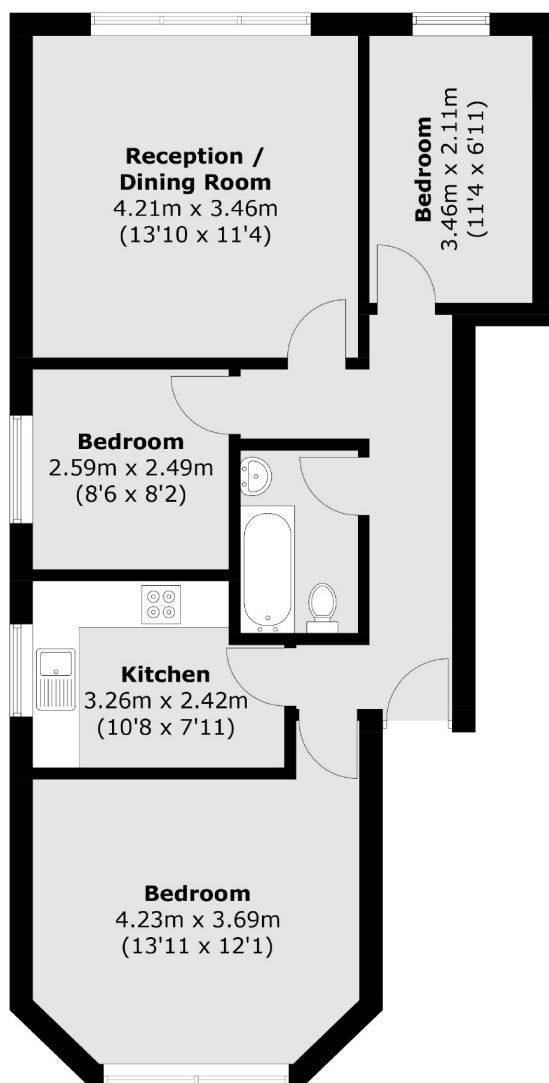
For further information on the costs associated with renting a property, please pop into our office or visit our website.





Polworth Road is a popular residential road situated close to Streatham train station, the 24 hour Tesco superstore, leisure centre and Streatham Common.





Total area (approx.): 69.8 sq. m (751.3 sq. ft)

Jacksons Streatham  
1-3 De Montfort Parade  
Streatham High Road  
Streatham  
London  
SW16 1BU

Energy Rating: D We aim to make our particulars both accurate and reliable. However they are not guaranteed; nor do they form part of an offer or contract. If you require clarification on any points then please contact us, especially if you're traveling some distance to view. Please note that appliances and heating systems have not been tested and therefore no warranties can be given as to their good working order.