



LEIGHAM COURT ROAD, SW16

£400,000

- Purpose built new build
- Two double bedrooms
- Two bathrooms
- Private balcony
- Long lease
- Energy rating: C



2



2



1



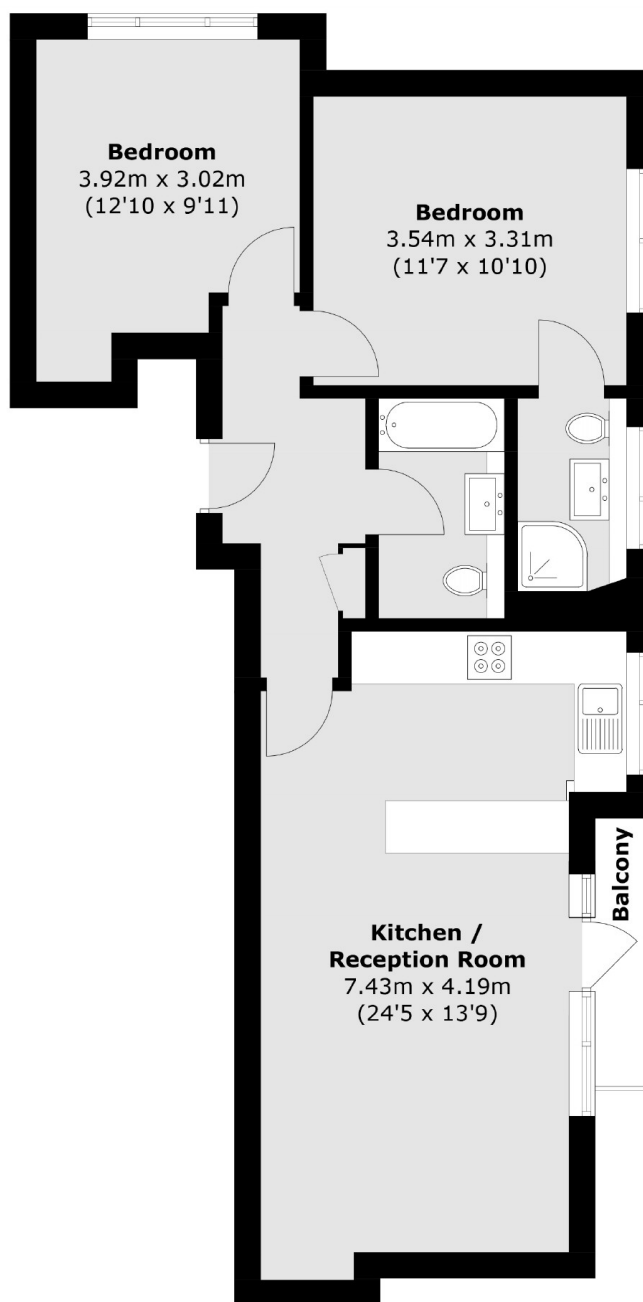
ABOUT THE HOME

With an abundance of space and natural light throughout, this lovely purpose built apartment comprises of: two double bedrooms, two contemporary bathroom suites, open plan living as well as a private balcony.

Carew House is a popular new build development located just a short distance from Streatham Hill Station. Residents have easy access to the amenities of both Streatham High Road and West Norwood High Street as well as a number of excellent transport links including Streatham Hill, West Norwood & Tulse Hill Station.







Total area (approx.): 63.1 sq. m (679.2 sq. ft)
Balcony: 1.9 sq. m (20.4 sq. ft)

JACKSONS STREATHAM

1-3 De Montfort Parade,
Streatham High Road,
Sales: 020 8487 3179
Lettings: 020 8487 3180

Energy Rating: C We aim to make our particulars both accurate and reliable. However they are not guaranteed; nor do they form part of an offer or contract. If you require clarification on any points then please contact us, especially if you're traveling some distance to view. Please note that appliances and heating systems have not been tested and therefore no warranties can be given as to their good working order.