



Barrow Road, SW16

£1,750 PCM

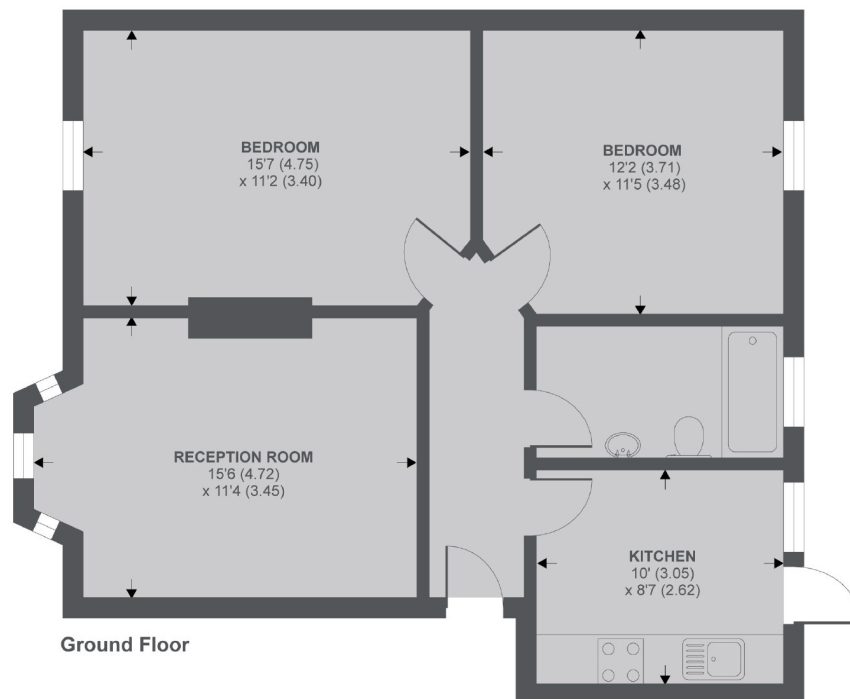
A two double bedroom purpose built flat benefiting from generous room proportions and neutral decor throughout.

- Two Double Bedrooms
- Modern Bathroom Suite
- Double Glazed
- Raised Ground Floor

For further information on the costs associated with renting a property, please pop into our office or visit our website.



Bladon Court is located on Barrow Road with the open spaces of Streatham Common, the new Streatham Hub Development, leisure centre and ice rink close by. Both Streatham and Streatham Common mainline stations are easily accessible.



APPROX. GROSS INTERNAL FLOOR AREA 696 SQ FT 64.6 SQ METRES

Copyright nichecom.co.uk 2019 REF : 509501

Jacksons Streatham
1-3 De Montfort Parade
Streatham High Road
Streatham
London
SW16 1BU

Energy Rating: B We aim to make our particulars both accurate and reliable. However they are not guaranteed; nor do they form part of an offer or contract. If you require clarification on any points then please contact us, especially if you're traveling some distance to view. Please note that appliances and heating systems have not been tested and therefore no warranties can be given as to their good working order.