



Braxted Park, SW16

£2,700 PCM

A large three bedroom conversion flat close to Streatham Common presented in excellent order.

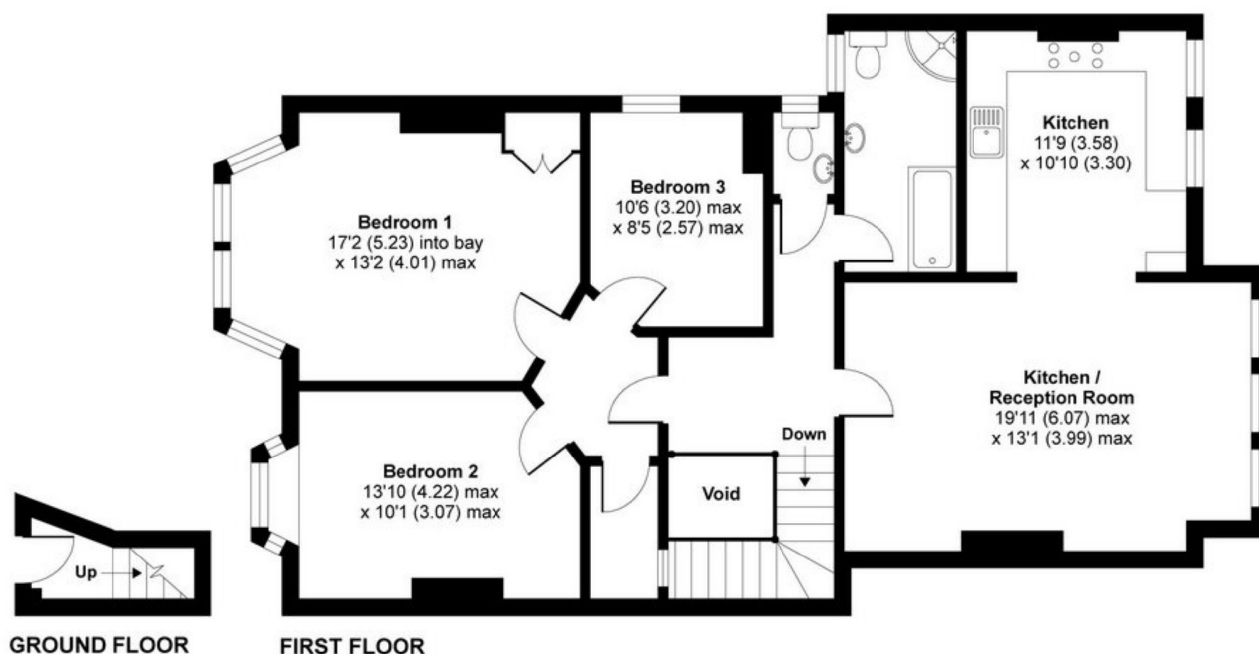
- Three double bedrooms
- Large reception
- Modern fitted kitchen
- Ideal for three sharers
- Part furnished
- Energy rating: C

For further information on the costs associated with renting a property, please pop into our office or visit our website.



Braxted park is a wide, tree lined street running off Streatham common itself and is located in a quiet conservation area within very close proximity of the main amenities of Streatham High Street. The property is also a short distance from the open spaces of the Rookery Gardens and Norwood Grove. Local transport includes Streatham with swift links to London Bridge and Streatham Common with links to Victoria via Clapham Junction.





APPROX. GROSS INTERNAL FLOOR AREA 1161 SQ FT 107.8 SQ METRES

Braxted Park, London, SW16

Copyright nichecom.co.uk 2017 Produced for Jacksons the Independent Estate Agents REF : 174017

Jacksons Streatham
1-3 De Montfort Parade
Streatham High Road
Streatham
London
SW16 1BU

Energy Rating: C We aim to make our particulars both accurate and reliable. However they are not guaranteed; nor do they form part of an offer or contract. If you require clarification on any points then please contact us, especially if you're traveling some distance to view. Please note that appliances and heating systems have not been tested and therefore no warranties can be given as to their good working order.