



Streatham High Road, SW16

£2,100 PCM

A very well presented two bedroom apartment with balcony in Derry Court, situated in the much sought after Streatham Hub development. The property is within easy access of central Streatham's amenities including numerous

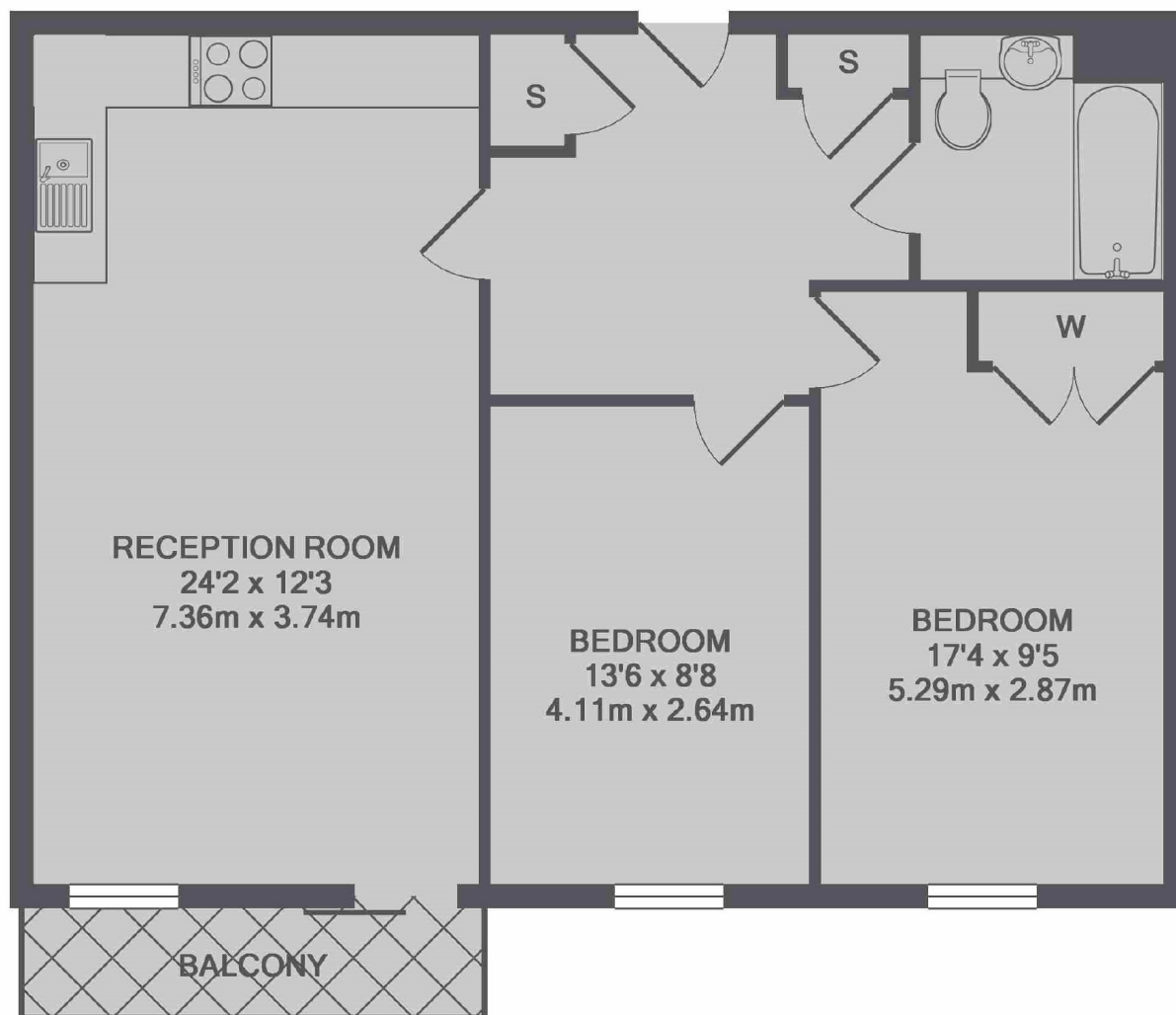
- Two Double Bedrooms
- Popular Development
- Modern Bathroom
- Very Convenient Location

For further information on the costs associated with renting a property, please pop into our office or visit our website.



Streatham Hub is a newly built development which includes a hyper market, leisure centre and state of the art ice rink. The location of this development is adjacent to the open expanses of Streatham Common and is also within close proximity of two main train stations; Streatham Common with links to Victoria via Clapham Junction and Streatham mainline with swift links to London Bridge. There are also multiple bus routes into the City.





TOTAL APPROX. FLOOR AREA 746 SQ.FT. (69.3 SQ.M.)

Jacksons Streatham
1-3 De Montfort Parade
Streatham High Road
Streatham
London
SW16 1BU

Energy Rating: B We aim to make our particulars both accurate and reliable. However they are not guaranteed; nor do they form part of an offer or contract. If you require clarification on any points then please contact us, especially if you're traveling some distance to view. Please note that appliances and heating systems have not been tested and therefore no warranties can be given as to their good working order.