



HARBOROUGH ROAD, SW16

£650,000

- Victorian maisonette
- Two/three large bedrooms
- Private garden
- Stunning interior
- Close to amenities and transport links
- Energy rating: D



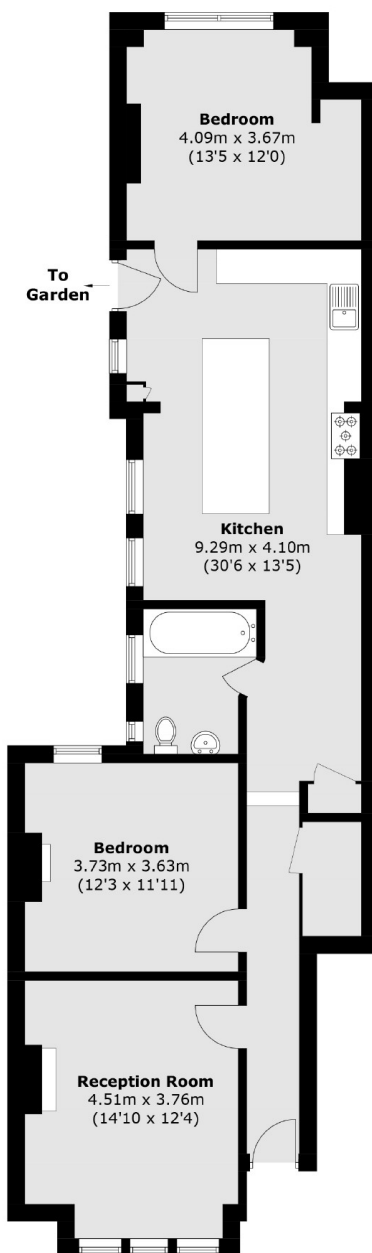


ABOUT THE HOME

An immaculate two-bedroom Victorian maisonette, on one of the most desirable roads in the Streatham area. The property benefits from an abundance of natural light and space throughout, in addition to a beautiful private garden as well as the ability to turn the reception room into an additional bedroom.

Harborough Road is widely regarded as the most desirable road in the area and benefits from being within close proximity to Sunnyhill Primary School. Further amenities include; numerous cafes, restaurants, bars and both independent and high street retailers. Frequent railway services from Streatham Hill provide easy access to Victoria via Clapham Junction and multiple bus routes leading into Brixton for the Victoria Line, whilst Streatham station offers regular services into London Bridge and Blackfriars via the Thameslink line.





Total area (approx.): 90.7 sq. m (976.3 sq. ft)

JACKSONS STREATHAM

1-3 De Montfort Parade,
Streatham High Road,
Sales: 020 8487 3179
Lettings: 020 8487 3180

Energy Rating: D We aim to make our particulars both accurate and reliable. However they are not guaranteed; nor do they form part of an offer or contract. If you require clarification on any points then please contact us, especially if you're traveling some distance to view. Please note that appliances and heating systems have not been tested and therefore no warranties can be given as to their good working order.