



RIGGINDALE ROAD, SW16

£550,000

- Victorian conversion flat
- Three bedrooms
- Share of freehold
- Close to Tooting Bec Common
- Excellent transport links
- Energy rating: D



3



1



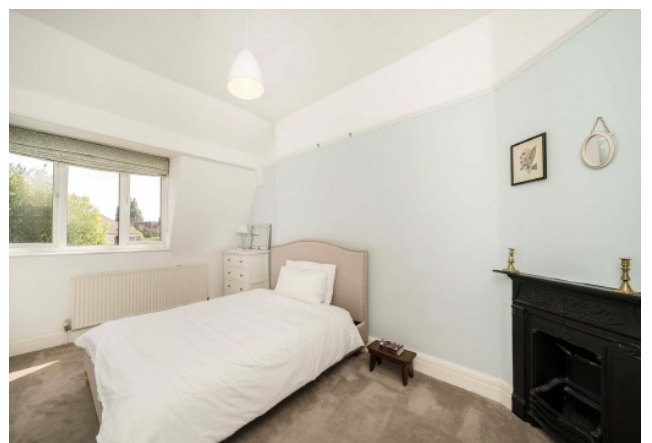
1



ABOUT THE HOME

Sold chain free, a beautifully presented three double bedroom Victorian conversion flat that has been well maintained and is in excellent condition throughout. One of the key features of this flat is its fantastic location, just moments away from the expansive green spaces of Tooting Bec Common.

Riggindale Road is a quiet and attractive tree lined road in the highly sought after Streatham Park Conservation area close to the green expanses of Tooting Bec Common. Residents benefit from a range of independent shops, bars and restaurants in both Streatham and Balham. Commuters have easy access to the Thameslink via Streatham Mainline Station, The northern line is also very easily accessible from Tooting Bec or Balham which are located around the common.







Total area (approx.): 79.9 sq. m (860.0 sq. ft)

JACKSONS STREATHAM

1-3 De Montfort Parade,
Streatham High Road,
Sales: 020 8487 3179
Lettings: 020 8487 3180

Energy Rating: D We aim to make our particulars both accurate and reliable. However they are not guaranteed; nor do they form part of an offer or contract. If you require clarification on any points then please contact us, especially if you're traveling some distance to view. Please note that appliances and heating systems have not been tested and therefore no warranties can be given as to their good working order.