



MOUNT NOD ROAD, SW16

£525,000

- Victorian converted flat
- Two double bedrooms
- Two bathrooms
- Share of freehold
- Good condition
- Energy rating: C



2



2



1



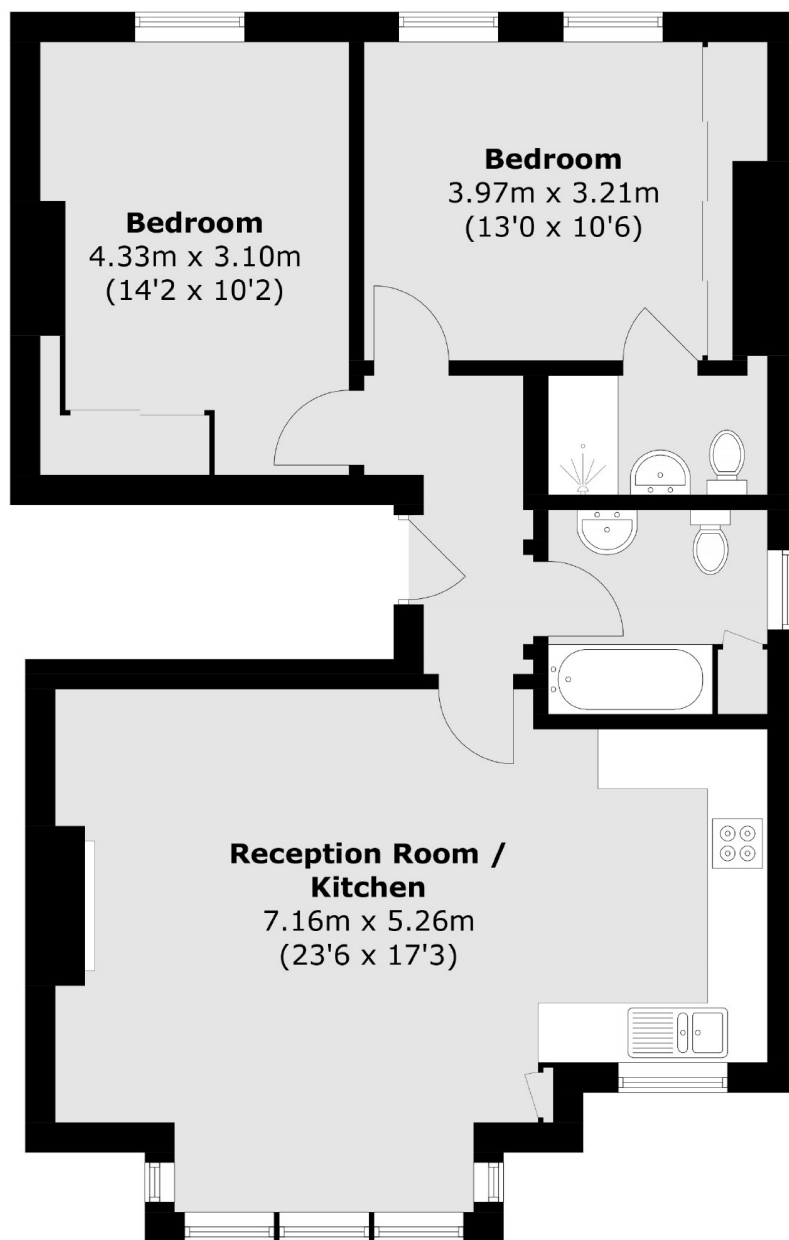
ABOUT THE HOME

A newly refurbished two bedroom Victorian converted flat. This property benefits from its large, bright living space and is in excellent condition.

Mount Nod Road is a wide tree lined residential road of mainly Victorian houses and is very well placed for access to Streatham Hill. The amenities of the area include many bars, independent coffee shops, restaurants, several large supermarkets, leisure centre, health clubs and both high street and independent retailers. Streatham Common itself and multiple transport links including three train stations and numerous bus routes leading into London, are also close at hand.







Total area (approx.): 71.8 sq. m (772.8 sq. ft)

JACKSONS STREATHAM

1-3 De Montfort Parade,
Streatham High Road,
Sales: 020 8487 3179
Lettings: 020 8487 3180

Energy Rating: C We aim to make our particulars both accurate and reliable. However they are not guaranteed; nor do they form part of an offer or contract. If you require clarification on any points then please contact us, especially if you're traveling some distance to view. Please note that appliances and heating systems have not been tested and therefore no warranties can be given as to their good working order.