



PINFOLD ROAD, SW16

£700,000

- Semi-Detached Victorian flat
- Two bedrooms
- Split level
- Private garden
- Modern kitchen
- Energy Rating: D



2



1



1



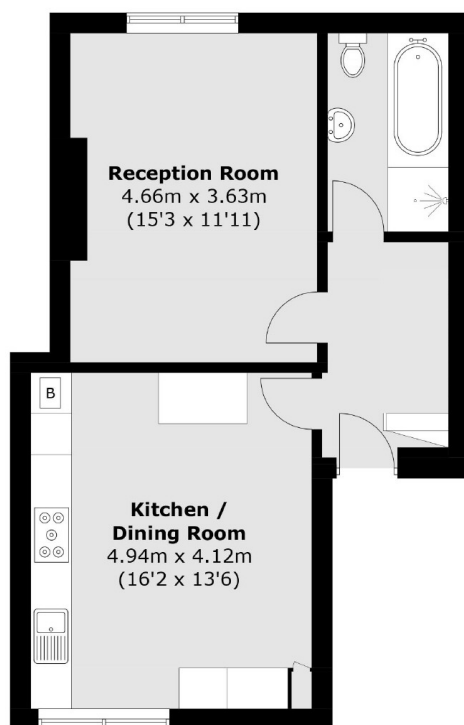
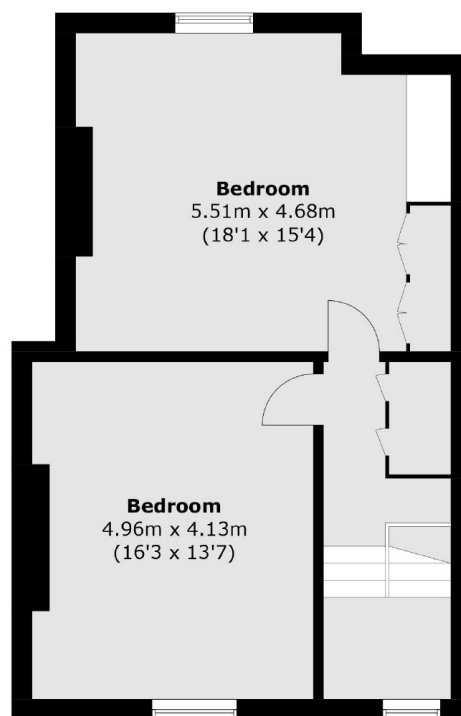
ABOUT THE HOME

A substantial split level, semi detached Victorian flat located in the heart of Streatham. The flat has ample living space and has been refurbished to a high standard whilst still retaining many original period features.

Pinfold Road is conveniently located off Streatham High Road with its many shops, bars, restaurants and bus links. Both Streatham and Streatham Hill train stations are also nearby.






First Floor

Second Floor

Total area (approx.): 106.9 sq. m (1,150.7 sq. ft)

JACKSONS STREATHAM

1-3 De Montfort Parade,
Streatham High Road,
Sales: 020 8487 3179
Lettings: 020 8487 3180

Energy Rating: D We aim to make our particulars both accurate and reliable. However they are not guaranteed; nor do they form part of an offer or contract. If you require clarification on any points then please contact us, especially if you're traveling some distance to view. Please note that appliances and heating systems have not been tested and therefore no warranties can be given as to their good working order.