



STREATHAM HIGH ROAD, SW16

£325,000

- One bedroom apartment
- Modern interior
- Concierge
- Large courtyard
- Views of Central London
- Energy rating: C



1



1



1





## ABOUT THE HOME

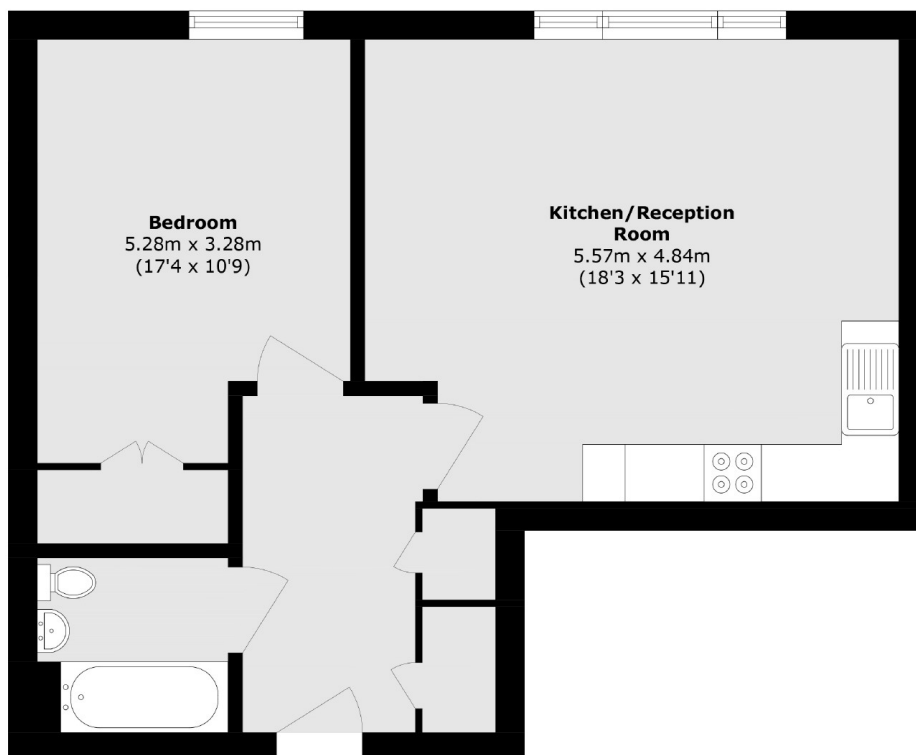
A lovely one-bedroom apartment in the Streatham Hub development, situated a stone's throw away from Streatham station and walking distance to the many cafés, pubs, restaurants and amenities that Streatham High Road has to offer.

Derry Court is a newly built development complex of flats, hyper market and leisure centre including, a state of the art ice rink. The location of this development is adjacent to the open expanses of Streatham Common & The Rookery. The development is also within very close to proximity to Streatham station offering direct access into The City. There also multiple bus routes into the City and directly to Brixton underground station.









Total area (approx.): 55.2 sq. m (594.1 sq. ft)

#### JACKSONS STREATHAM

1-3 De Montfort Parade,  
Streatham High Road,  
Sales: 020 8487 3179  
Lettings: 020 8487 3180

Energy Rating: C We aim to make our particulars both accurate and reliable. However they are not guaranteed; nor do they form part of an offer or contract. If you require clarification on any points then please contact us, especially if you're traveling some distance to view. Please note that appliances and heating systems have not been tested and therefore no warranties can be given as to their good working order.