



LANCASTER AVENUE, SE27

£895,000

- Detached, double fronted Victorian property
- Large basement (509 sqft)
- Four bedrooms
- Central location
- Large private garden
- Energy rating: D



4



1



2



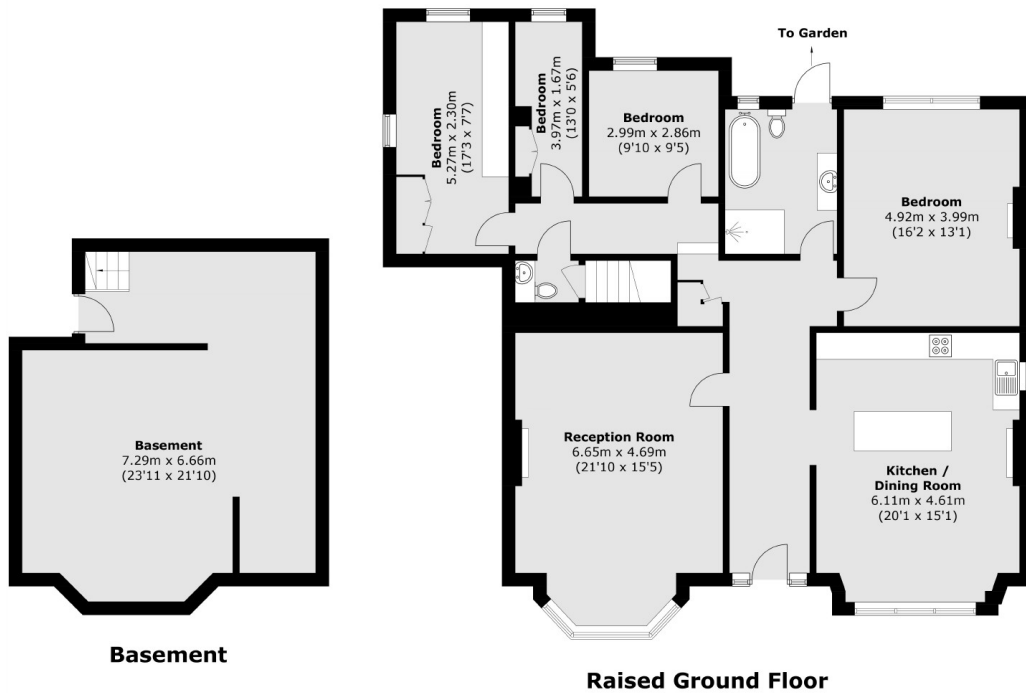
ABOUT THE HOME

A charming ground floor garden flat occupying the entire ground floor of this imposing detached Victorian building boasting 1569 sqft of living space. The property has been finished to a very high standard and benefits from your own front door with entrance hallway, a large number of retained period features and a large private garden.

Lancaster Avenue is a popular tree lined road located in the heart of West Norwood but within close proximity of Tulse Hill, Herne Hill and West Dulwich. Residents have easy access to a range of local amenities including the parade of shops, bars and restaurants of both Herne Hill, West Norwood High Street and Rosendale Road as well as a number of green spaces such as Brockwell and Dulwich Park. There are a number of commuting options including the Thamelisnk via Tulse Hill, Southern via West Norwood, Southeastern via West Dulwich and a number of regular bus routes into the City.







Approx Internal Area (approx.): 145.8 sq. m (1569.4 sq. ft)
Basement (approx.): 47.3 sq. m (509.1 sq. ft)

JACKSONS STREATHAM

1-3 De Montfort Parade,
Streatham High Road,
Sales: 020 8487 3179
Lettings: 020 8487 3180

Energy Rating: We aim to make our particulars both accurate and reliable. However they are not guaranteed; nor do they form part of an offer or contract. If you require clarification on any points then please contact us, especially if you're traveling some distance to view. Please note that appliances and heating systems have not been tested and therefore no warranties can be given as to their good working order.