



KIRKSTALL ROAD, SW2

£775,000

- Large two bed maisonette
- Two bathrooms
- South facing garden
- Telford Park Conservation
- Close to Tooting Bec Common
- Energy rating: D





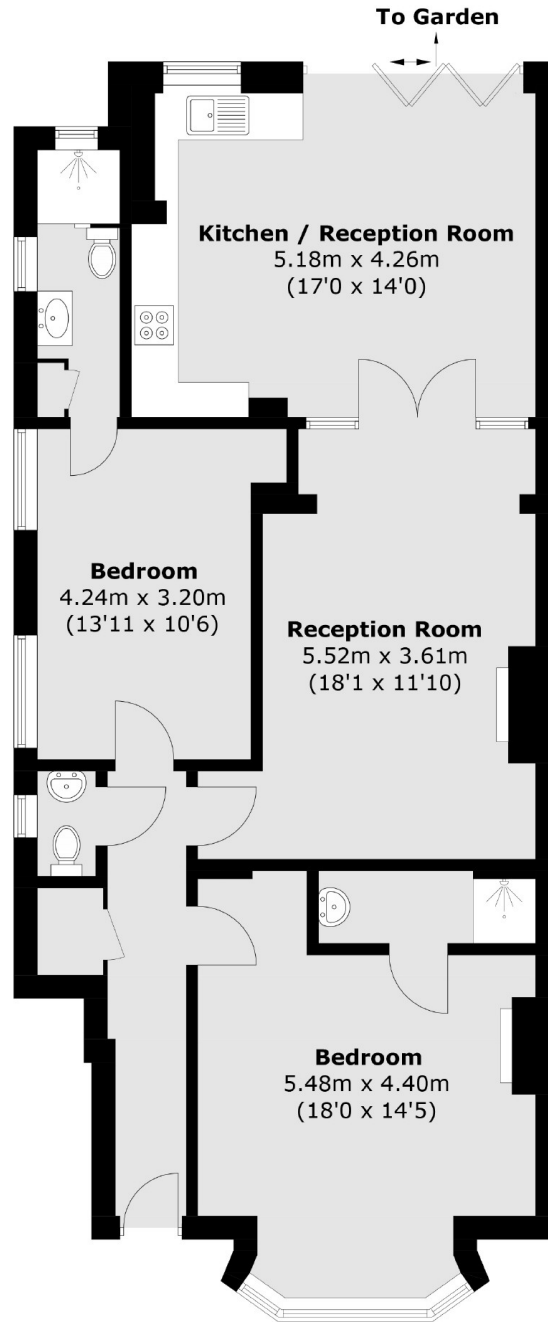
ABOUT THE HOME

A spacious two bed maisonette with an open plan kitchen diner and good sized south facing garden. The flat provides very generous living space and is located a short walk from Tooting Bec Common.

Kirkstall Road is a quiet tree lined road situated within close proximity of Balham and Streatham Hill. The Telford Park Conservation area is one of Streatham and Balhams most sought after neighbourhoods. These stunning red brick Victorian buildings have some of the largest gardens you will find in the local area. Telford Park is known for its tennis club which hosts a number of events throughout the year for the local residents.







Total area (approx.): 91.8 sq. m (988.1 sq. ft)

JACKSONS STREATHAM

1-3 De Montfort Parade,
Streatham High Road,
Sales: 020 8487 3179
Lettings: 020 8487 3180

Energy Rating: D We aim to make our particulars both accurate and reliable. However they are not guaranteed; nor do they form part of an offer or contract. If you require clarification on any points then please contact us, especially if you're traveling some distance to view. Please note that appliances and heating systems have not been tested and therefore no warranties can be given as to their good working order.