



VALLEY ROAD, SW16

£425,000

- New build development
- Two double bedrooms
- Two bathrooms
- Private south facing balcony
- Private parking space
- Energy rating: B



2



2



1



## ABOUT THE HOME

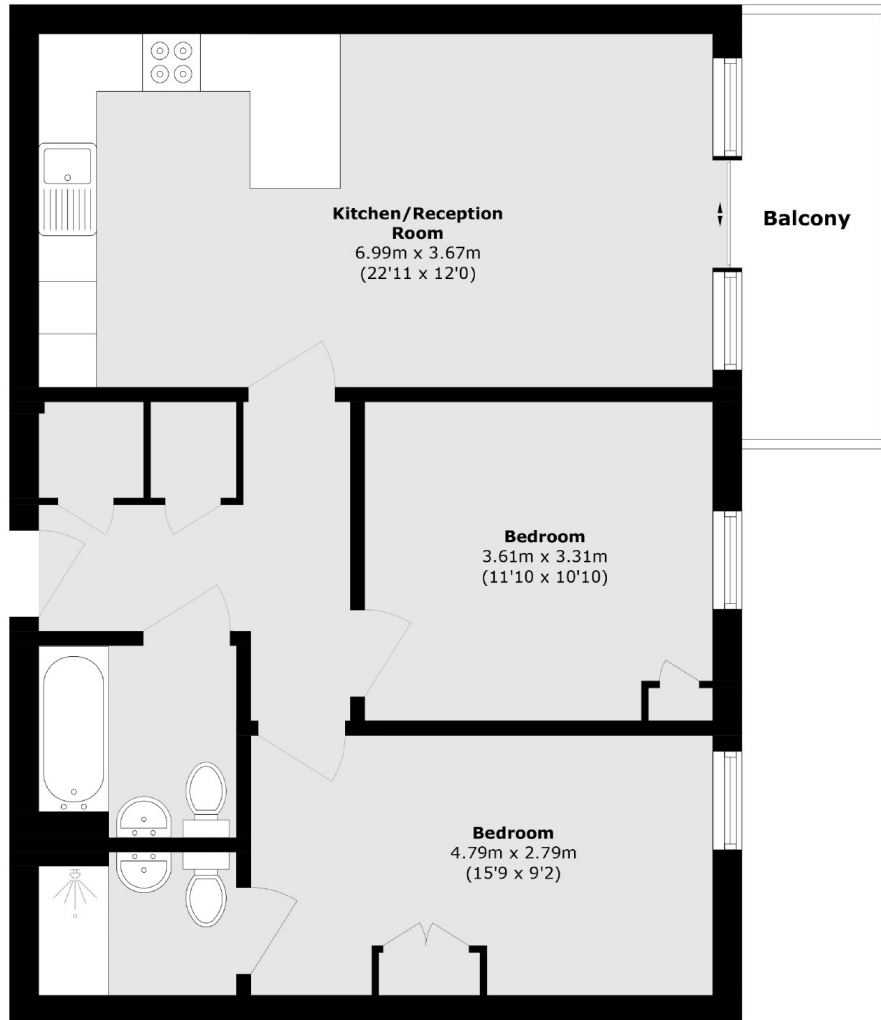
A spacious two bedroom apartment in the Old Dairy Development located just a short distance from Streatham Common. The property benefits from a private balcony and is sold with no onward chain.

The Old Dairy development is conveniently located within close proximity to Streatham Common and the array of shops, bars and restaurants of Streatham High Road. There are a number of commuting options including the Southern via Streatham Common and Streatham Hill, the Thameslink via Streatham Station as well as a number of regular bus routes into the City via Brixton.









Total area (approx.): 69.7 sq. m (750.2 sq. ft)

Balcony area (approx.): 6.5 sq. m (69.9 sq. ft)

#### JACKSONS STREATHAM

1-3 De Montfort Parade,  
Streatham High Road,  
Sales: 020 8487 3179  
Lettings: 020 8487 3180

Energy Rating: We aim to make our particulars both accurate and reliable. However they are not guaranteed; nor do they form part of an offer or contract. If you require clarification on any points then please contact us, especially if you're traveling some distance to view. Please note that appliances and heating systems have not been tested and therefore no warranties can be given as to their good working order.