



LEWIN ROAD, SW16

£500,000

- Victorian Conversion
- Three Bedrooms
- Split Level
- Chain Free
- Modern Finish
- Close to Streatham Common



3



1



1





## ABOUT THE HOME

A Victorian converted ground floor maisonette on a quiet residential road. This property benefits from having three bedrooms, is close to Streatham Common Station and Streatham Common Park, has a modern finish with a Juliet balcony and is being sold chain free.

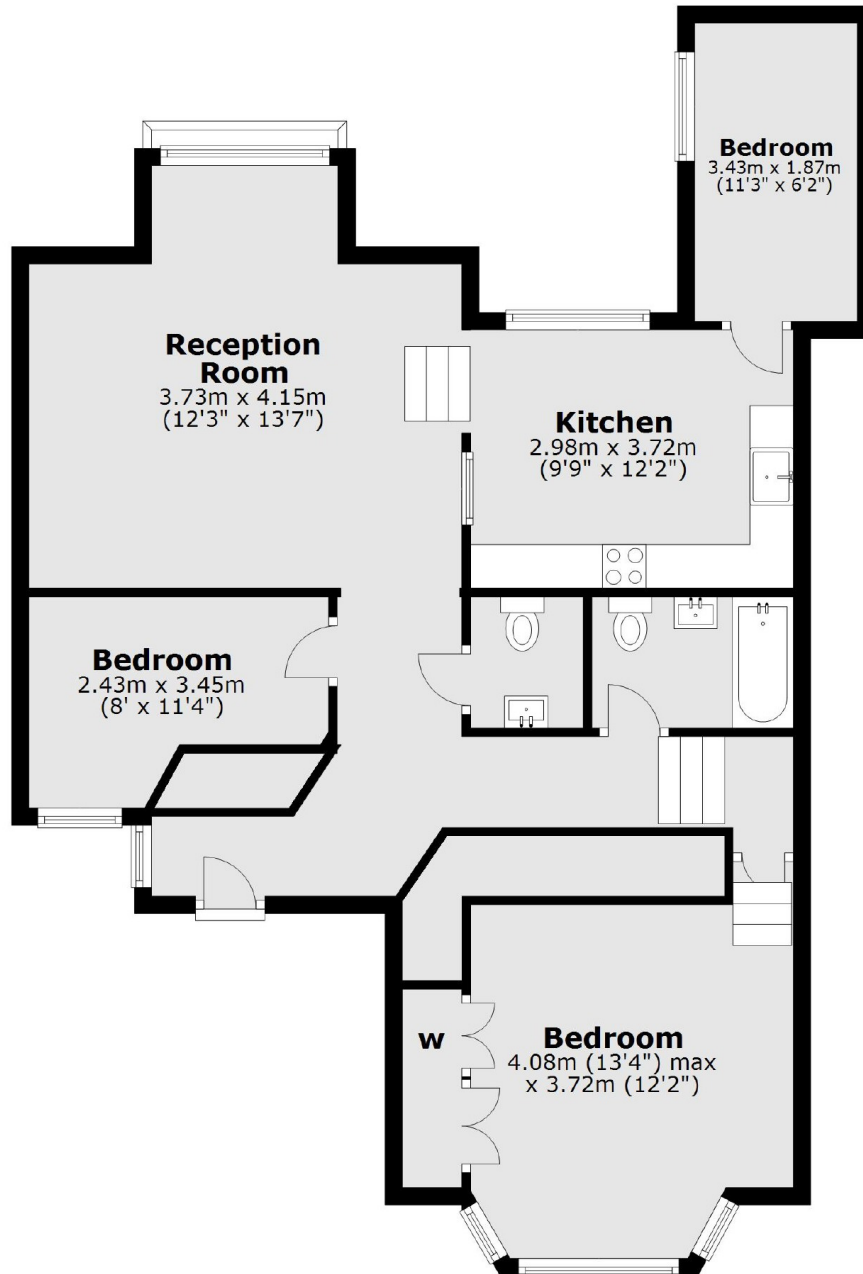
Lewin Road is a very popular and sought after tree lined road located between Streatham and Streatham Common Station. Residents have easy access to an array of amenities including a number of independent shops, bars, restaurants and a selection of outstanding private and state schools.







## Ground Floor



Total area: approx. 84.3 sq. metres (907.9 sq. feet)

### JACKSONS STREATHAM

1-3 De Montfort Parade,  
Streatham High Road,  
Sales: 020 8487 3179  
Lettings: 020 8487 3180

Energy Rating: C We aim to make our particulars both accurate and reliable. However they are not guaranteed; nor do they form part of an offer or contract. If you require clarification on any points then please contact us, especially if you're traveling some distance to view. Please note that appliances and heating systems have not been tested and therefore no warranties can be given as to their good working order.