



## Cricklade Avenue, SW2

£4,500 PCM

A five bedroom Edwardian house available to both families and professionals, offering over 1500 sq ft of space with a private garden.

- Semi-Detached
- Edwardian House
- Five Double Bedrooms
- Two Reception Rooms
- Large Kitchen/Diner
- Private Garden

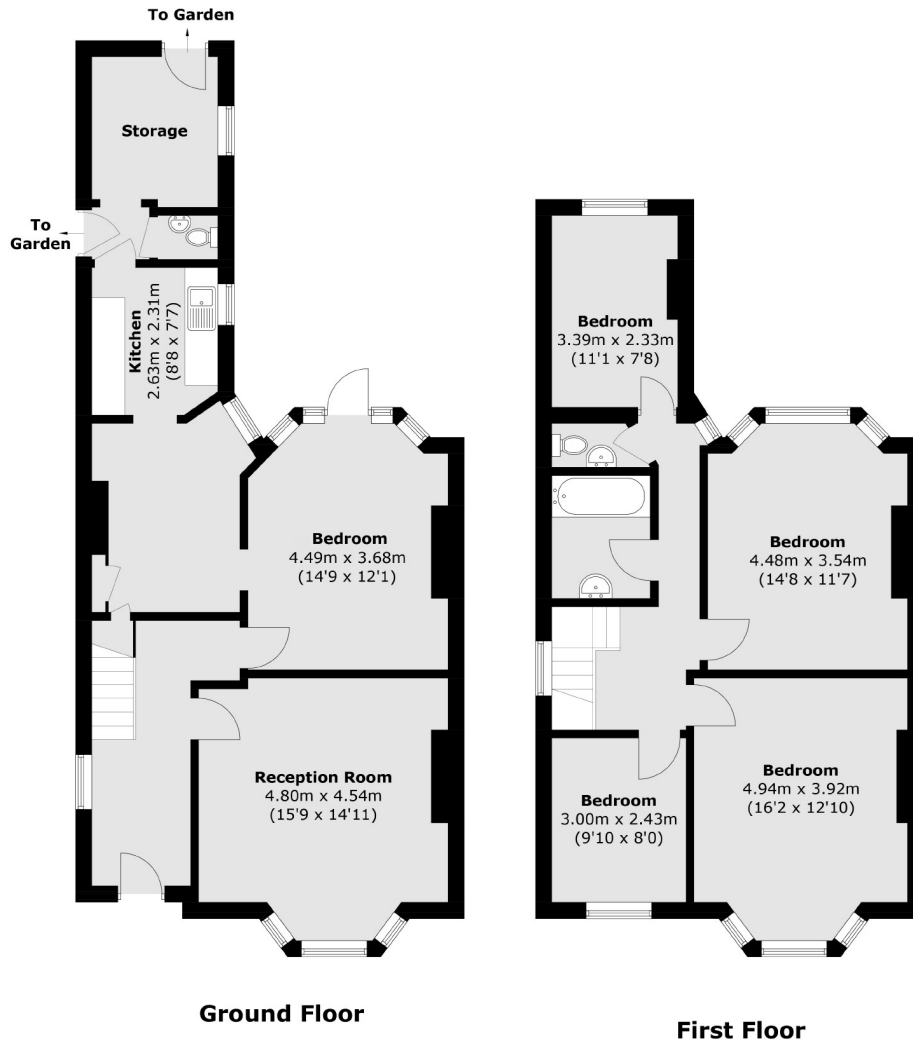
For further information on the costs associated with renting a property, please pop into our office or visit our website.



Cricklade Avenue is a quiet residential street in the sought after ABC roads in Streatham Hill just a short distance from the bars, restaurants, pubs and cafes Streatham Hill has to offer. Streatham Hill station is close by, with frequent trains in to London Victoria in approximately 17 minutes. Numerous buses will get you in to Brixton and beyond from the high street.







Total area (approx.): 138.9 sq. m (1,495.1 sq. ft)

Jacksons Streatham  
1-3 De Montfort Parade  
Streatham High Road  
Streatham  
London  
SW16 1BU

Energy Rating: E We aim to make our particulars both accurate and reliable. However they are not guaranteed; nor do they form part of an offer or contract. If you require clarification on any points then please contact us, especially if you're traveling some distance to view. Please note that appliances and heating systems have not been tested and therefore no warranties can be given as to their good working order.